



Interlochen
CENTER FOR THE ARTS

ANNUAL REPORT 2020

We are Interlochen.



Interlochen Center for the Arts inspires people around the world through excellence in education and the arts, providing dynamic opportunities for artists and arts enthusiasts of all ages. Through Interlochen Arts Camp, Interlochen Arts Academy, Interlochen Presents, Interlochen Public Radio, and Interlochen College of Creative Arts—Interlochen propels lifelong creativity.

Dear Interlochen Family and Friends

Thank you for an extraordinary year. Your heartfelt dedication to Interlochen helped us rise to the challenges of these unusual and challenging times, surpassing even my highest aspirations and having more impact than I can convey.

Your philanthropy plays an essential role at Interlochen, comprising 18% of our annual operating budget and facilitating the moments that define the Interlochen magic. It is because of you that we have so much to celebrate today and even more to look forward to in the future.

Your gifts supported the "ONE" tour in Miami, where, thanks to the gracious hosting and exceptional organization of Valerie Dillon and Daniel R. Lewis, we were welcomed to three days of performances, conversations, listening, and learning that touched the lives of our students, Miami students, and local audiences. Your generosity also made it possible to expand diversity, equity, and inclusion among our students, faculty, and staff, and to connect our students with visiting professional artists in person and virtually.

When the effects of the global pandemic reached our enclave in the woods, you responded. Your gifts made it possible for Interlochen Public Radio to continue broadcasting. You supported the dissemination of Interlochen archival performances and other artists' works to help us stay connected, and you ensured that students could experience Interlochen through your scholarships.

Your philanthropy supported our world-class faculty and staff, whose resilience in the face of great change has been nothing short of inspirational. Their ability to gracefully pivot Camp to an online format and to reimagine the logistics of the Academy for a safe return to campus this fall illustrates their incredible character and passion for Interlochen.

Interlochen's most precious asset has always been its people: the students, faculty, alumni, parents, volunteers, and supporters who put our mission into action every day. Your generosity demonstrates the indomitable spirit of Interlochen. It is a privilege to work together to share that spirit with the world.

With gratitude,

Trey Devey
President





Young Artists Connect as "ONE" in Miami

Camp and Arts Academy through the generous support of Dan Lewis since 2018, performed side-by-side with Academy students during the "ONE" performance.

Interlochen students also performed to a packed recital hall in Vero Beach, hosted by Interlochen Trustee Sara Whiting and her husband, Mike.

This once-in-a-lifetime experience of our 118 students was possible thanks to the generous support of Dan Lewis and Valerie Dillon, Joyce and Judson Green, Glynn Williams and Charlene Moore, Upstaging Inc., and Rock-it Cargo.



In March, 118 Interlochen Arts Academy students from all seven majors headed south to Miami, Florida, to connect with fellow young artists, learn about the local arts culture, and present an original, collaborative, and interdisciplinary performance to that community.

The performance, titled "ONE," took place at the Frank Gerhy-designed New World Center. "ONE" was derived from the idea of each student speaking with their individual voice, while also speaking with the collaborative voice of their community. The timely, fast-paced performances centered upon themes of citizen artistry, intercultural communication through the arts, and the power of creativity to shift perspectives and inspire change.

That authentic voice is thanks, in part, to our students' collaboration with artist-in-residence Sydney James Harcourt (AS 94, 97, IAA 94-97). Sydney's advice to students was to, "Be easy to work with, believe in yourself, always do your best work, stay a student, and find a positive community!"

Bookended with works by Dmitri Shostakovich, the event featured original songs, poetry, jazz, monologues, and film. Arts Academy dancers performed original choreography costumed in garments created by visual arts students, whose recent works were also featured in a powerful exhibition in the New World Center.

With incredible organizational efforts orchestrated by incoming trustee Valerie Dillon, the multi-day tour gave Interlochen students the opportunity to establish and build relationships with young artists in a variety of Miami-based arts organizations, including: Miami Music Project, Young Musicians Unite, UP! Music, and Guitars over Guns. The Miami Music Project, whose students have been attending Interlochen Arts



"The opportunity to go on a tour like this means everything. I don't see any other way I could get that firsthand experience being a touring artist."

— Isabella Farmer (IAC 18, IAA 18-20)

INTERLOCHEN HIGHLIGHTS

June 2019 – August 2020



DSO-INTERLOCHEN COLLABORATION CONTINUES

During Camp 2019, the Detroit Symphony Orchestra (DSO) and Interlochen reunited for the first time since 2006. The collaboration included an orchestral performance led by the music director of France's Ensemble Intercontemporain, Matthias Pintscher; side-by-side opportunities with the DSO and Interlochen students; master classes; and individual training sessions led by DSO musicians.

The DSO also joined Interlochen Online in July 2020. The partnership provided orchestral repertoire workshops, practical performance tips with chamber music recordings for small ensembles, and virtual recitals by DSO musicians and Interlochen faculty.

ACCOLADES AND AWARDS

Interlochen Arts Academy students received an unprecedented 356 awards in the West Michigan division of the regional Scholastic Art & Writing Awards, including 196 awards for creative writing students, 146 awards for visual arts students, and senior portfolio awards in each arts area.

Sixteen current and former Interlochen Arts Academy students received National YoungArts Foundation awards.

Interlochen was the only school in Michigan to receive the prestigious National Green Ribbon Schools Award for our efforts to provide effective environmental and sustainability education and reduce environmental impact.

STUDENT ENROLLMENT

INTERLOCHEN ARTS CAMP 2019	INTERLOCHEN ARTS ACADEMY 2019-20	INTERLOCHEN ONLINE 2020
2,755 Camp students	552 Academy students	1,441 Camp 2020 students
FROM 53 states & territories AND 40 countries & territories	FROM 45 states & territories AND 25 countries & territories	FROM 47 states & territories AND 21 countries & five continents



INTERLOCHEN LAUNCHES PARTNERSHIP WITH PARALLEL 45 THEATRE

Interlochen and Traverse City's Parallel 45 Theatre launched a first-ever partnership that included a six-week residency for directors and theatre-makers to create new material with Academy theatre students.

Of Green Gables, based on L.M. Montgomery's beloved classic, was the result of the residency. The performance was the first joint production of Parallel 45 Theatre and Interlochen; it was recorded and streamed live.

INTERLOCHEN BRIDGES COMMUNITY AND CAMPUS

Interlochen presented two free performances of *The Sleeping Beauty* to over 850 local children and families.

We also welcomed more than 1,500 children and families for our annual Winterlochen. Student-led activities included face painting, singing with a rock band, conducting the orchestra, writing a poem, painting a mural, sledding, and throwing frozen fish. About 500 participants gathered on Cabutti Field to perform *Transient Landscapes*, a large-scale participatory sound art project that replicated the sounds of a melting glacier. Composer Matthew Burtner and co-creator/instrument designer Matthew Duvall (IAA 85-89, IAC 84-85) joined students for the performance.



INTERLOCHEN INNOVATES With COVID-19 Crisis

Since COVID-19's impact hit Interlochen in March, our ability to innovate has soared despite uncertain conditions.

Interlochen adapted its artistic and academic education to a virtual format for both the Academy and Interlochen Online, reimagining the 93rd season of Interlochen Arts Camp. Our faculty initiated new ways of teaching and our students found new ways of learning. Dozens of guest artists "Zoomed" in to perform and demonstrate techniques. Interlochen's best-loved traditions—Festival, Honors Convocation, Commencement, First Gathering, "Collage," and "Les Préludes"—took place virtually in homes worldwide.

Interlochen Public Radio remained on-air and served as a lifeline for the northern Michigan community. Interlochen donated hundreds of pounds of organic fruit and vegetables from the R.B. Annis Botanical Lab and Community Garden to a local food pantry.

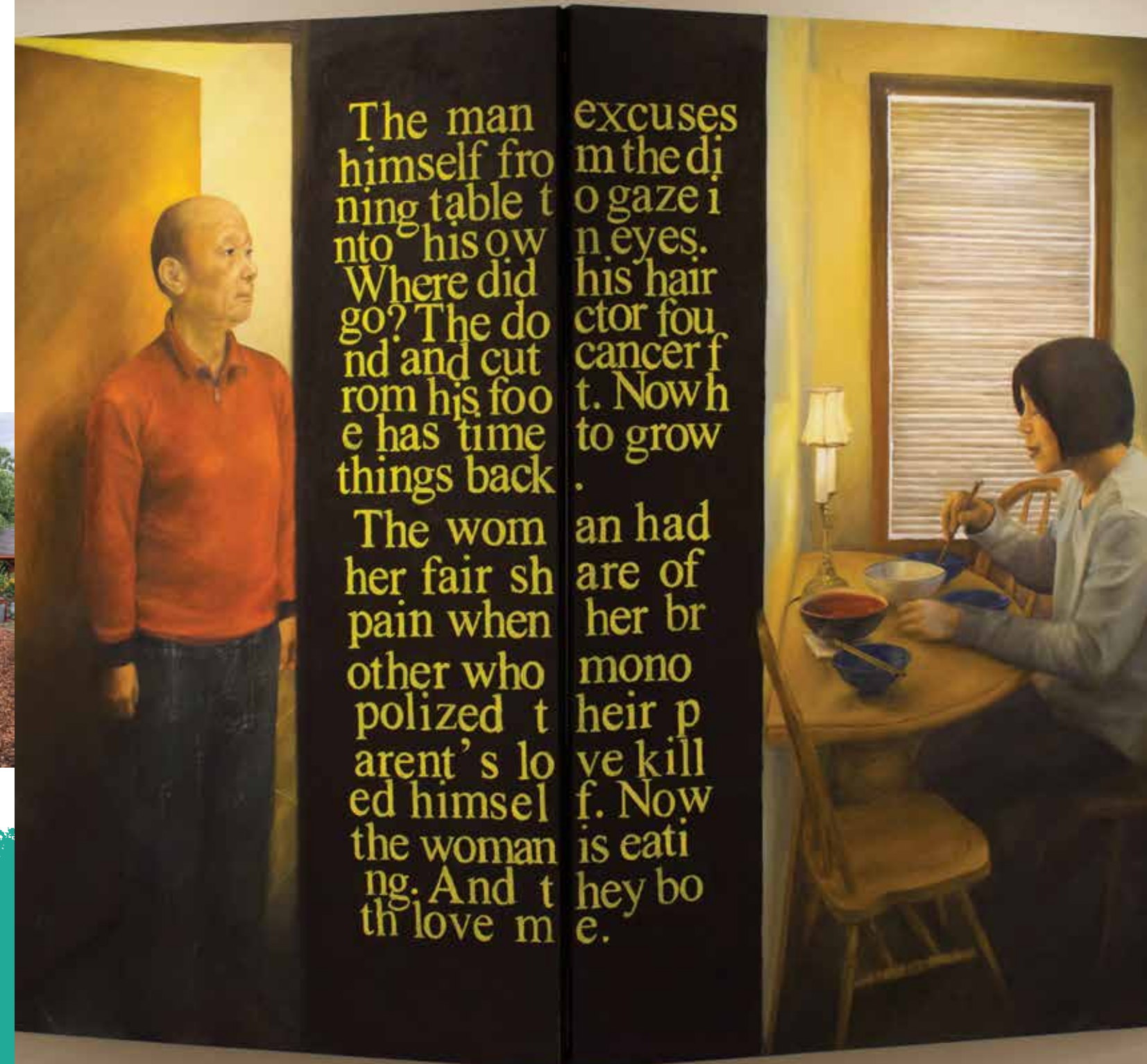
Meanwhile, we planned for reopening Interlochen Arts Academy this fall. Our Campus Health Task Force worked with our nurse practitioner, a contagious disease specialist, to implement stringent health protocols and sanitization standards. We modified our academic calendar and created a contained campus environment.

Through it all you were with us, with your kind, generous support. Academy families donated their room and board refunds to the Annual Fund. Camp scholarship donors redesignated their support to Interlochen Online and Academy scholarships, the Annual Fund, and student hardship support. Camp families refunded deposits back to Interlochen, as did Interlochen College for Creative Arts registrants. And our Board of Trustees committed \$1 million to jump start Interlochen's new Emergency Response Fund.

While uncertainty continues, Interlochen's innovation accelerates—thanks to an incredible campus community and donors like you.



INSTITUTIONAL HIGHLIGHTS Student Works



“I am so incredibly proud and impressed of how our faculty and staff embraced the challenges of developing substantive online curricula for Academy and Camp. They showed—once again—Interlochen’s leadership in arts education worldwide.”

— Camille Colatosti, Provost

Your Philanthropy and Its Impact



The “magic of Interlochen.” Since my June 2019 arrival on campus, alumni, parents, faculty, and friends uttered this phrase again and again. With boundless enthusiasm, they shared stories, memories, and the assurance that I would understand that magic soon enough.

I’ve seen that magic throughout the year, often through the impact of your philanthropic support. For instance...

Escaping the snowy January landscape into the Herbert H. and Barbara C. Dow Center for Visual Arts, I was rejuvenated by the stunning color and energy of a juried student art show, each piece representing months of dedication and hard work by our talented students, applying the highly-specialized training that your gifts make possible...

Tuning my radio to Classical IPR on Saturday morning and hearing *Music by Request*, I enjoyed listening to classical favorites requested by listeners. The all-classical station—one of just 66 in the country—continues to broadcast, thanks to your support...

During the remarkable 2020 Miami “ONE” tour, I saw Interlochen students greeted as celebrities after a mini-Collage performance in Vero Beach and again after the performance at New World Center in Miami. The response of the audiences demonstrated the power of the arts to create intergenerational connections. Philanthropic support made that experience possible for 118 Interlochen students.

This year, 7,037 individuals and 180 organizations made a gift to Interlochen. If you were one of those 7,217 donors—thank you again. Your belief in the power of Interlochen to inspire and change lives through the arts has manifested extraordinary things, as highlighted on these pages.

Sincerely,

John Bogley
Vice President, Philanthropy

Fiscal Year 2020 in Review:

SCHOLARSHIP SUPPORT

\$18,622,090 *in financial assistance* **TO OVER 1,419** *Academy and Camp students*

OPERATING BUDGET

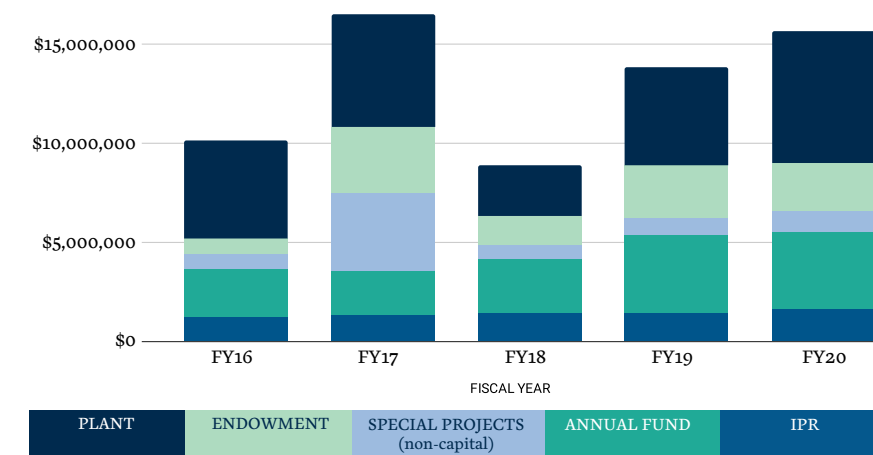
\$48,009,808 *Revenue*
\$47,504,390 *Expenses*

FUNDRAISING

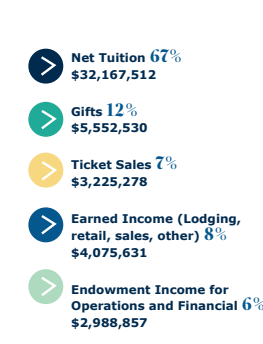
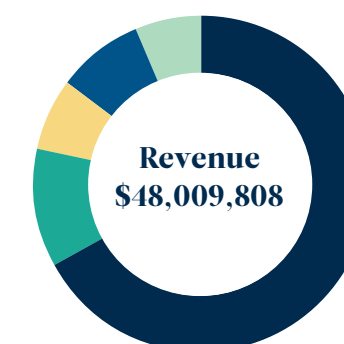
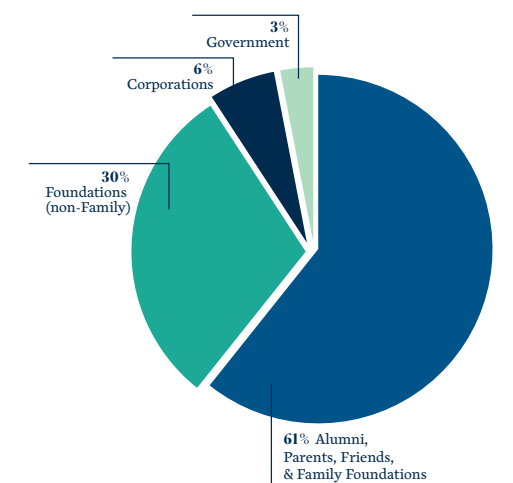
Interlochen Annual Fund:	\$3,872,254
Interlochen Public Radio Annual Fund:	\$1,680,276
Endowment:	\$2,364,470
Plant/Facilities:	\$6,673,075
Special Projects (non-capital):	\$1,069,176
Total	\$15,659,251

Comprehensive financial reports may be requested by calling our Advancement Office at 231.276.7623. Complete audited financial statements are available online at www.interlochen.org/support.

THE IMPACT OF YOUR SUPPORT



YOUR SUPPORT BY GIFT SOURCE



New Era Dawns for Dance



Dance arrived at Interlochen in 1940. Less than a decade later, it found its home in one of the most breathtaking settings on campus, a building that hugged the shore of Green Lake, with windows reflecting the sparkling water. Over the next 70 years, more than 5,000 dance students would be molded by their time spent honing their craft together in the Hildegard Lewis Dance Building. Meanwhile, the building's limitations grew with each passing decade.

“When I arrived as a freshman, my dreams were big. I am delighted to report that, four years later, my dreams are even bigger thanks to the inspiration, care, and support I have received at Interlochen. Thank you for believing in our dreams, thank you for creating this amazing space for dance.”

— Jonathan Hughes (IAA 16-20)

Opening in January 2021, the expanded and renovated Dance Center will be nearly tripled in size. Located in a spectacular and prominent place on campus, the new facility will enrich and inspire young dancers today, much as it did for those who found their place and their calling at the barre at Interlochen 80 years ago.

Dedicated to the Art of Movement

“I can’t think of a more beautiful setting to inspire future generations of performing artists. It brings me great joy to be able to help support the dreams and aspirations of all those who will grace the magical grounds of Interlochen in years to come.”

— Cate Caplin (IAC 69-71, IAC Fac 18-19)



Cate Caplin’s own dance roots are at Interlochen. For two memorable summers, she cultivated her passion in that beloved dance building by the lake. A professional dancer, choreographer, director, and producer, Cate’s work includes hundreds of productions from film and musical theatre to dramatic classics. Whether working at the Paris Opera House or on a Broadway stage, Cate cherishes the impact of Interlochen.

Cate’s experience came full-circle when she returned to Interlochen in the summers of 2018 and 2019 as Camp faculty, investing her professional expertise directing and choreographing the High School Musical Theatre Golden Age Revue and teaching daily master classes. While on campus, she experienced student needs first-hand, as well as faculty and guest artist challenges in the historic space.

When Cate learned of the effort to give dance a new home, she stepped forward with a significant personal commitment—as the last leadership gift needed to reach the \$6.9 million fundraising goal.

Because of Cate and her family’s support, along with many generous donors, this new center dedicated to the art of movement will pulse with the rhythm of the pines, the waves of the lake, and the inspired energy of young dancers for generations to come.





DOW HOUSE CONNECTS Past with Future

In the 1930s, the Dow family began a legacy of transformational philanthropy at Interlochen. Their generous support helped shape the development of Interlochen’s programs and campus.

In 2019, The Herbert H. and Grace A. Dow Foundation made a \$4 million gift commitment to a new residence hall with a visiting artist suites facility. This gracious and highly flexible facility will allow Interlochen to better serve tomorrow’s change-makers, as well as attract and retain sought-after faculty and guest artists.

Opening in the fall of 2021, the Herbert H. and Grace A. Dow House is the final component of Interlochen’s campus master plan, launched three decades ago. The \$11.2 million, 38,000 square-foot facility boasts two wings. One will serve as living quarters for Academy students during the school year, converting to lakeside apartments for Arts Camp faculty in the summer. The second wing will serve as much-needed quarters for guest artists and performers who instruct and create on our campus year-round.

The gift from The Herbert H. and Grace A. Dow Foundation (Mike and Sara Whiting) is the largest outright, non-bequest gift Interlochen has ever received. Additional generous philanthropy from The Herbert H. and Barbara C. Dow Foundation (Hank Dow, Pam Dow Collie) and the Harry A. and Margaret D. Towsley Foundation (Judy Rumelhart), along with the support of other Dow family members, round out an extraordinary contribution to the future of arts education.

Many leadership donors have already stepped forward to help fund this signature project, including a generous \$750,000 dollar-for-dollar challenge grant available to Interlochen when we raise that amount by December 31, 2020. Fundraising continues as we look forward to the opening of this stunning new building in its waterfront location.

“The Dow family and the Foundation share a long history with Interlochen. We are proud to support this extraordinary cultural institution and its mission to develop future leaders whose lives and work will be shaped by rich learning experiences in the arts. The Herbert H. and Grace A. Dow House will be home to the very people who will realize Grace’s vision for improving the cultural lives of our communities.”

— Mike Whiting, President Emeritus of The Herbert H. and Grace A. Dow Foundation

DOW HOUSE FEATURES

RESIDENCE HALL

3 floors covering **32,247** square feet

72 student beds through
36 shared student rooms

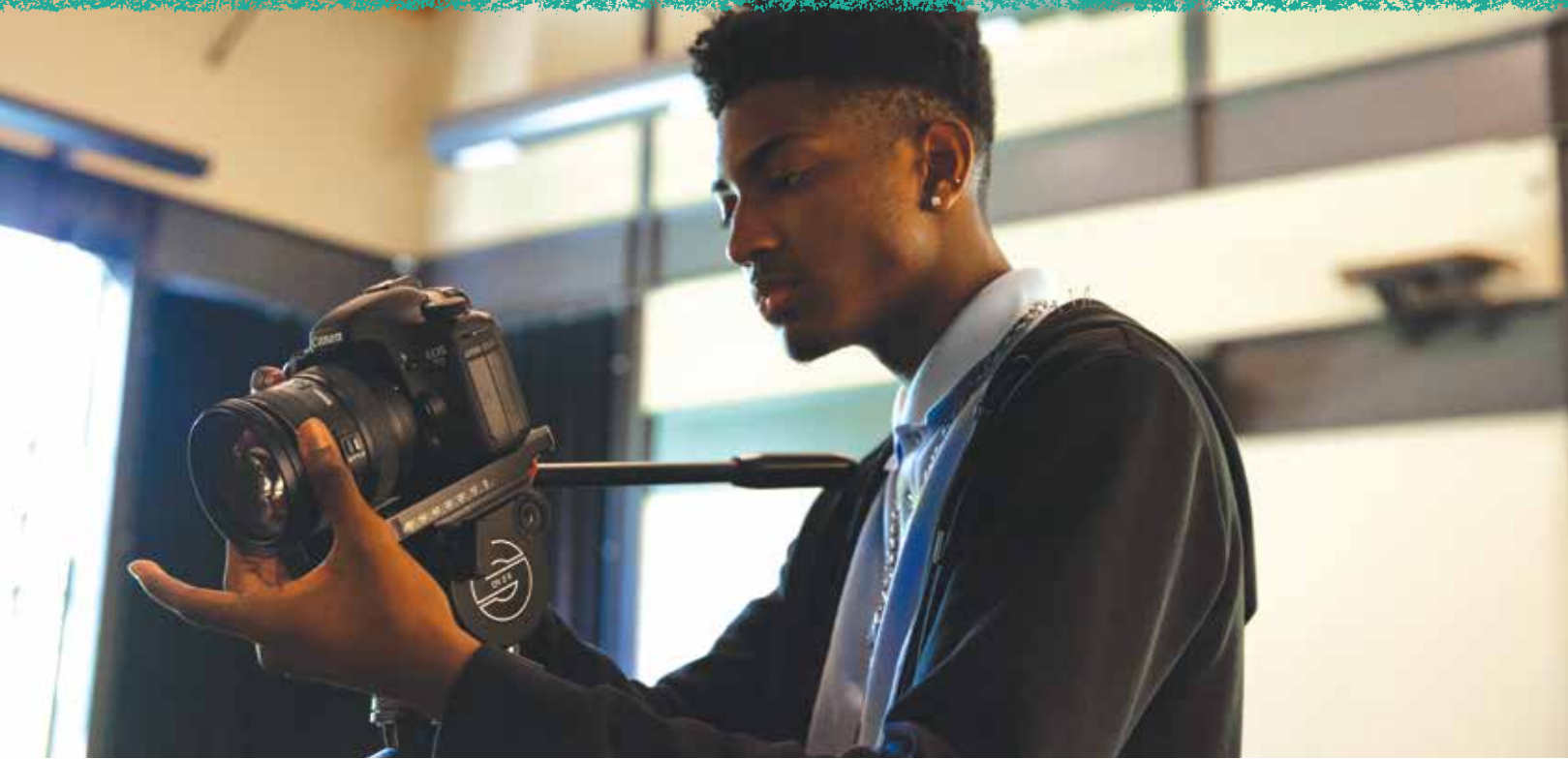
VISITING ARTIST SUITES

2 floors covering **6,217** square feet

4 large suite pods that can be divided
into **8** living units

ENDOWED SCHOLARSHIPS

Accelerate Artists' Potential



A scholarship is an investment in potential. Each year, more than 400 of our Academy students and 900 of our Camp students receive scholarships. Of those, 294 young artists had the opportunity to experience Interlochen because a generous donor supported their potential via an endowed scholarship.

Endowed scholarships have permanent funding provided by donors. They ensure that current and future generations will have the opportunity to find their passion and purpose at Interlochen.

This year, 12 new scholarship endowments were created through new gifts. We are thankful for the giving spirit of these donors including:

- **Romulus Portwood**, who chose to honor his late wife and her family's connection to Interlochen with the Lucas-Portwood Family Camp Scholarship.
- **George and Miette Michie**, who celebrate their fathers' legacies at Interlochen and beyond with the Huybrechts-Michie Endowed Camp Scholarship.
- **Camp alumnus Nathan and Christie Stark**, current Academy parents whose sons have attended both Camp and Academy. Their strong family connection to Interlochen led Nathan and Christie to establish the Stark Family Endowed Camp Scholarship.
- **Roger and Ann Looyenga**, who support an Academy scholarship with first preference for piano students through the Looyenga Family Endowed Academy Scholarship.



LIFELONG APPRECIATION OF THE ARTS

Helen and Fred Altman are longtime volunteers and ardent Interlochen supporters. This year, they created their second endowed scholarship at Interlochen, the Otto and Anna Altman Memorial Endowed Camp Scholarship for students studying theatre. This scholarship is in memory of Fred's parents, honoring their deep, lifelong appreciation of the arts.

"Thank you for my generous scholarship. I have learned not to be afraid to show personality through dancing, learned how to pick a monologue, and improved my voice. Thank you for all these opportunities!"

— Hannah, Musical Theatre Production, Camp, Age 16, Raleigh, N.C. / Otto and Anna Altman Memorial Endowed Camp Scholarship Recipient

FINDING THEIR PASSION AT INTERLOCHEN

Michael and Anne Poon learned to love Interlochen as Camp and Academy parents. Their son Linus Poon attended Interlochen Arts Camp and then Interlochen Arts Academy, majoring in clarinet. Linus' transformational experience was clear even continents away. This year, the Poons generously chose to pay this experience forward by establishing the Poon Family Scholarship for students attending Camp.

"We feel that Linus' three consecutive years of Interlochen summer camp experience prior to enrolling at the Academy was pivotal. That was when he found, and let us realize, that music is the passion of his life. We hope this scholarship will give other students like Linus the chance to find their own passion at Interlochen." — Anne Poon



Endowed Scholarships

Academy Endowed Scholarship
Morton and Barbara Achter Endowed Camp Scholarship*
Virginia M. Alten Memorial Scholarship
Otto and Anna Altman Memorial Endowed Camp Scholarship
Ann T. and Richard G. Anderson Memorial Fund
Charles and Rita Anderson Academy Scholarship
Diane Anderson Endowed Academy Scholarship
endowed by her father John B. Anderson in honor and memory of C. William Trout
Dorothy Anderson Memorial Scholarship
Katherine McKee Anderson Endowed Scholarship
Lois Harper Anderson Scholarship

Judith Andrews Memorial Camp Scholarship
Bob Annis Endowed Scholarship
Bob Armer Endowed Camp Scholarship
George and Dolores Austin Memorial Scholarship
Virginia B. Ball Creative Writing Competition Scholarship
Martin A. Baloyan Memorial Scholarship
Barnes-Womer Camp Scholarship
Barstow Foundation Scholarship
Phoebe Nickel Barstow Memorial Scholarship
Margaret Dieterle Bausch Memorial Scholarship
Donald R. Belcher Memorial Scholarship
Madeline Belkin Scholarship
Alfred Berkowitz Foundation Scholarship

Mandell and Madeleine Berman Foundation Camp Scholarship
Berry Family Scholarship
Sally Birnkrant-Myers Scholarship
Boggess Family Endowed Scholarship
Arnold Bourziel Memorial Scholarship
Skipper Bourziel Junior Girls Scholarship
Boutet Family Endowed Academy Scholarship in Low Brass*
Douglas Boyd Endowed Camp Scholarship for Strings
Kate Boyd Endowed Camp Scholarship in Piano
Mr. and Mrs. Fred M. Brakeman Scholarship
M. Brandenburg Scholarship
Drs. Susan and Neil Bressler Scholarship

* New scholarship since June 2019

Endowed Scholarships - continued

Bressler WYSO Principal Clarinet Chair Scholarship
 Briggs - McDonald NMC Scholarship
 Nadine Brunner Endowed Memorial
 Painting Scholarship
 Donna Louise Brunsma Endowed Scholarship
 Camp/Academy Endowed Scholarship
 Camp Endowed Scholarship
 Leo P. and Anthony J. Carlson Camp Scholarship
 Ellen Case Memorial Endowed Scholarship
 Jerome F. and Blanche M. Cerny Scholarship
 Clarence & Grace Chamberlin Foundation
 Academy Scholarship
 Chormann-Hann Endowed Camp Scholarship
 Elizabeth & Michael Clark Memorial Scholarship
 Jonathan David Cohen Memorial Scholarship
 Margie K. and Louis N. Cohen Music Scholarship
 Arthur J. and Glenna B. Collins Scholarship
 Annabel Comfort Memorial Scholarship
 Golde F. Copeland Memorial Scholarship
 Dorthy S. Corson and Lillie B. Scheide
 Memorial Scholarship
 Janice F. Corson Scholarship
 Cowell Family Camp Scholarship
 Creative Writing Award Scholarship
 Allen B. Cutting Scholarship
 Jean Dake Memorial Scholarship
 Marvin and Betty Danto Scholarship
 David J. Davison Memorial Scholarship
 Robert Leason Sharpe and Anita C. Dean Scholarship
 Mary Jane Dempler Endowed Scholarship
 Lee Wick Dennison Memorial Scholarship
 Helen L. DeRoy Memorial Scholarship
 Amy M. Devey Endowed Academy Scholarship
 in Dance
 Christina B. Diver Camper Scholarship
 Alden B. Dow Memorial Scholarship
 Edward J. and Joyce Downing Scholarship
 George W. Drake Memorial Scholarship
 Sandra Aldrich Drew Scholarship
 Dr. Scholl Foundation Creative Writing Scholarship
 Dr. Scholl Foundation Scholarship for Orchestra Strings
 Dr. Scholl Foundation Scholarship for Orchestra Winds
 Dunbar Percussion or Dance Scholarship
 Evola Music Scholarship
 Festersen Family Scholarship
 Richard M. Fiegel Memorial Scholarship
 Morris & Nellie Finkelstein, Doherty and
 House Memorial Scholarship

Gerald J. and Beth B. Fischer Scholarship
 Harriet Flagg Music Scholarship*
 Lawrence L. Fleming Memorial Scholarship
 Barrett Foa Endowed Camp Scholarship in Theatre Arts
 Edward E. Ford Foundation Scholarship
 Sidney Forrest Scholarship
 Susan Leigh Foster Endowed Academy
 Dance Scholarship
 Edward P. Frohlich Piano Scholarship
 Edith Davidson Geissler Scholarship
 Otto W. Geissler, Jr. Memorial Scholarship
 Generations Fund Scholarship
 Mary and Donald Gonzales Memorial Scholarship
 James C. Gordon Memorial Scholarship
 Mary and Britt Gordon Endowed Scholarship
 Bertha I. Gordy Memorial Scholarship
 Betty B. Greenfield Scholarship
 Cassel Grubb Cello Scholarship
 Margaret Schuele Haegg Endowed Camp Scholarship
 Romine G. Hamilton Memorial Scholarship
 Marge Hammes Scholarship
 Moe and Francine Handleman Endowed
 Music Scholarship
 Julia Hansen Scholarship
 Ann and Byron Hanson Endowed Camp Scholarship
 Dr. and Mrs. Howard Hanson Scholarship
 Francis Harlow Scholarship
 Henry Harris Memorial Scholarship
 Naomi Harris Endowed Camp Scholarship
 Daniel Hartman Memorial Chair Scholarship - Violin II
 Carl E. and Audrey E. Haskett Memorial Scholarship
 William Randolph Hearst Foundation Scholarship
 Bettyjo Heckrodt Memorial Scholarship
 Pierre V. Heftler Memorial Scholarship
 Dorothy L. Henricks Memorial Scholarship
 John and Joan Herlitz Family Scholarship
 Martha and Jack Hicks Scholarship
 Ted R. High Memorial Scholarship
 Barbara B. Hirschhorn Music Campership Endowment
 Kathy Mason Hodges Scholarship
 Russell and Annabelle Holcomb Endowed Scholarship
 Erwin K. Holland-Moritz Scholarship
 Jan Q. Holmquist Scholarship
 Jack (John R.) and Mary Lou Hood Endowed
 Academy Scholarship
 Pamela and Stephen Horne Family Endowed
 Camp Scholarship

Dr. Claire Smith Hornung Intermediate
 Girl Scholarship
 Page and Dan Houser Scholarship
 Marvin C. Howe Horn Scholarship
 Ruth H. Hughes Endowed Dance Scholarship
 Lawrence Hurst Double Bass Endowed
 Camp Scholarship
 The Huybrechts-Michie Endowed Camp Scholarship*
 Paul and Leah Israelow and Harriet Israelow
 Goldner Memorial Scholarship
 Roger E. & Mary Jane Jacobi Camp Scholarship
 Roger E. & Mary Jane Jacobi Academy Scholarship
 Roger E. Jacobi & Edward P. Frohlich Scholarship
 William and Helen Jansen Memorial Scholarship
 Donald Johanos Endowed Scholarship
 Nicholas A. Johnson Memorial Scholarship
 Paul and Lois Jordan Endowed Scholarship
 Paul and Lois Jordan Jr. Endowed Scholarship
 Joy Family Endowed Camp Scholarship in Visual Arts
 JSJ Foundation Scholarship
 Mildred and Bernard Kayden Family
 Endowed Camp Scholarship
 R. Graham Keevil Memorial Scholarship
 Caroline Kempton Memorial Scholarship
 George and Joyce Kempton Academy
 Piano Scholarship
 James D. Kent Endowed Music Scholarship
 Dr. Marvin Klein Memorial Scholarship
 Klein/Jewell Choral Endowment Scholarship
 Knight Family Scholarship
 Jenny H. and Otto F. Krauss Scholarship
 Laddie A. Kubec Scholarship
 Lorna and Ernest Lender Scholarship
 Louetta Lerner Endowed Scholarship
 Harold Levine and Faith Forrest Scholarship
 Dorothy Lewand Endowed Scholarship
 Sally A. Lewis Organ Scholarship
 Richard H. and Carolyn Lineback Family Scholarship
 Bruce A. Loomis Endowed Scholarship
 Looyenga Family Endowed Academy Scholarship*
 Ted Loudermilk Memorial Scholarship
 Lucas-Portwood Family Scholarship*
 Catharine E. "Betsy" Davis Luhman
 Memorial Scholarship
 Martha Lundy Scholarship
 Waldemar and Mary Ellen Lungershausen Scholarship
 Herbert H. Lyon Scholarship
 Joseph E. Maddy Memorial Scholarship

Reuben C. and Edith W. Maddy Scholarship
 Doris V. Markel Voice Scholarship
 Jennifer Evelyn Marquette Memorial Scholarship
 Martin Family Music Scholarship
 Marvel Family Memorial Scholarship
 John Rust Mattern Memorial Scholarship
 Ilse Mayfield Scholarship
 Aaron McCloud Memorial Scholarship
 Dr. Robert Montague McDonald Endowed
 Arts Academy Scholarship
 Anne McElheny Memorial Music Scholarship
 Whitney S. McGuire Memorial Scholarship
 Edward and Cecily McNeil Camp Scholarship
 Charles K. McWhorter Memorial Scholarship
 Mekula Family Endowed Camp Scholarship
 Daniel A. and Vivian Metrick Scholarship
 Genevieve Rae Miess Memorial Scholarship
 Miller-Jacobson Scholarship
 Frank Miller Memorial Scholarship
 George Roland and Lillian Postles Miller
 High School Camp Bass Clarinet Scholarship
 Louise Tuller Miller Scholarship
 Monticello College Foundation Scholarship
 Harice K. & Robert T. Monyek Memorial Scholarship
 Shari Morgan and Clara Sabin Camp Scholarship
 Lucy B. Morley Scholarship
 Karen Mumma Endowed Scholarship
 Kelly Muzzi Memorial Scholarship
 Lyle Myers Scholarship
 William and Jeanne Myers Endowed Scholarship
 National Academy of the Arts Scholarship
 Donna V. Neal Endowed Scholarship
 Ralph and Margaret Nehls Memorial Scholarship
 Ida A. Norlin High School Scholarship
 Julius & Ruth Novick Memorial Scholarship
 Clara Noyes Endowed Academy Scholarship
 Travis N.T. Olson and Lucile M. Olson Scholarship
 Anne-Marie Oomen and Katey Schultz ICCA
 Creative Writing Scholarship
 William and Martha Paine Orchestral Scholars
 Fred and Marcia Palmer Memorial Scholarship
 Fred W. Palmer, M.D. and Marcia Weissgerber
 Palmer Endowed Scholarship
 Jean Parsons Visual Arts Endowed Scholarship
 W. Calvin and Marian Patterson Endowed Scholarship
 Pattis Family Endowed Camp Scholarship in
 Musical Theatre*
 Shirley Pauley Memorial Junior Orchestra Scholarship

Helmer R. and Larida Petersen Scholarship
 Robert C. Pew Scholarship
 Janet and Lucas Pfeiffenberger Scholarship
 Polish Endowment Scholarship
 Herbert & Elsa Ponting Foundation Scholarship
 Poon Family Fund Scholarship*
 Portland Bridge to Interlochen Scholarship
 William and Leota Ponstingle Camp
 Endowment Scholarship
 Hortense Cramer Ramsay Scholarship
 Milton M. Ratner Foundation Scholarship
 Reader's Digest Endowed Camp Scholarship
 Reader's Digest Endowed Academy Scholarship
 David E. Reese Family Foundation Scholarship
 Mildred Reisner Endowed Scholarship
 David Scott Rhind Endowed Scholarship
 Dean E. Richardson Scholarship
 Josephine F. and N. Sayles Richter Memorial
 Endowed Camp Scholarship
 Rollert Music/Science Endowment Scholarship
 Alicia Steeves Rowe Scholarship
 Barbara Taylor Sandys Dance Scholarship
 George and Barbara Schilling Piano Scholarship
 Robert Scholten Camp Scholarship
 Charles Ward Seabury Scholarship
 Doris E. Seitz Memorial Scholarship
 Selmer Company Scholarship
 Hamer D. and Phyllis C. Shafer
 Foundation Scholarship*
 Ruth Marda Shanberge Family Endowed
 Camp Scholarship
 Norma Shaw Endowed Camp Scholarship*
 Michael D. Silber Memorial Scholarship
 Jonathan L. Silets Memorial Scholarship
 Harvey M. Silets Memorial Scholarship
 Silverton Family Camp Scholarship
 Werner and Elizabeth Simon Endowed Scholarship
 Singer-Songwriter Academy Scholarship
 Harry A. Sisson Memorial Scholarship
 Marilyn J. and Don L. Smith Memorial Scholarship
 Laura Sondee Memorial Scholarship
 Stephen Sprouse Memorial Scholarship
 Margaret A. Stace Scholarship
 Stark Family Endowed Camp Scholarship*
 Stephenson Endowed Scholarship
 Shirley Stevens Memorial Scholarship
 Paul R. Stimson Scholarship

James F. Stoddard, MD and Elizabeth A. Stoddard
 Music Scholarship
 Mikhail Stolarevsky and Alexander Stolley
 Concertmaster Scholarship
 Esther W. Stone Memorial Scholarship
 Beth Stoner Wiegand, Marjorie G. and
 Richard P. Stoner Endowed Camp Scholarship
 Marguerite W. Stracke and Alfred O. Stracke
 Memorial Scholarship
 Edward Ralph and Kathleen Maguire Sun
 Music Scholarship
 Target Foundation Scholarship
 Laurence W. Thomas Writing Scholarship
 Lee Madsen Thomas Scholarship
 Sarah L. Titus and Tilda Morris Endowed
 Academy Scholarship
 Tuesday Musicale/Detroit - Gertrude Greer
 Scholarship
 Miles I. Tunnaclyff Scholarship
 Alice C. Tyler Trust Endowed Scholarship
 Frederick S. Upton Foundation Scholarship
 Stephen E. and Elizabeth Upton Scholarship
 Margaret Tyler Vial Scholarship in loving memory,
 Elizabeth Vial Upton
 William E. Votruba Memorial Scholarship
 Robert M. and Lenore Wagner Memorial Scholarship
 Arlene Wangler Memorial Scholarship
 A. Montgomery Ward Foundation Scholarship
 Margaret F. Ward Music Scholarship
 Margaret F. Ward Visual Art Scholarship
 Jane Weaver Endowed Scholarship
 Susan Mott Webb Memorial Scholarship
 Mrs. Richard H. Webber Scholarship
 Bessie Mae Weissgerber Memorial Scholarship
 Illene Wenner and Shari Morgan Camp Scholarship*
 Byrdene M. Wilson Memorial Scholarship
 Matilda R. Wilson Fund Scholarship
 World Youth Symphony Endowed Scholarship
 Ben Wright Scholarship
 Farny R. Wurlitzer Foundation Camp Scholarship
 WYSO Endowed Strings Scholarship
 Avedis Zildjian Company Camp
 Percussion Scholarship
 Avedis Zildjian Company Endowed Scholarship
 Francis J. and Margaret S. Zimmermann
 Endowed Scholarship

ANNUAL FUND DONORS

Lead the Way



AN INTERLOCHEN LEGACY

Cathy Stephenson first came to know Interlochen through her husband, the legendary Camp theatre instructor Dude Stephenson. She deepened that relationship as a Camp theatre faculty member and as a Camp parent, watching her son grow during summers among the pines. As a member of the President’s Club, Cathy’s leadership annual giving is a testament to her family’s Interlochen legacy, honoring today’s and tomorrow’s creative spirits.

“Interlochen transformed my life in such a positive, unexpected way that I feel compelled to do what I can to share that experience with those who come after me. Every concert, every performance, and presentation is a gift that transports me back to the very first day I stepped onto campus, and at the same time gives me hope for the future.” — Cathy Stephenson

Outstanding young artists are the heart of Interlochen, and Annual Fund gifts are its lifeblood. Annual Fund gifts provide scholarships that ensure an exceptional arts education is attainable to promising students from all economic backgrounds. They help attract innovative faculty and guest artists by maintaining an unparalleled space for creative focus and experimentation. And, they facilitate once-in-a-lifetime opportunities for students, like performances and touring, that provide real-world learning.

Leadership Annual Giving

Leadership support makes the magic of Interlochen possible. Membership in the Interlochen President’s Club (\$5,000+ annual gift) or the W. Clement Stone Society (\$1,000+ annual gift) signifies a deep commitment to the next generation of artists, audiences, and creative leaders—and their invaluable contributions to the world. We are grateful to the 114 President’s Club members and the 332 Stone Society members who honored their connection to Interlochen this year through their leadership gifts.

PAVING THE WAY FOR THE NEXT GENERATION

Arts Academy faculty member Brian McCall has been dedicated to Interlochen for more than 20 years. An instructor of history and political science, Brian demonstrates the interconnected relationship between the arts and academics in his classroom every day. Passionate about his students’ dreams, Brian understands the essential impact leadership annual giving has on their Interlochen experience. As both a sustaining monthly donor to Interlochen Public Radio and a member of the W. Clement Stone Society, Brian’s generous and consistent annual giving is paving the way for the next generation of artists and their advocates.

“The arts, music, culture, and the news are essential human needs almost as important as food, clothing, and shelter. Interlochen and IPR are producers and keepers of these critical elements of human—and humane—society. Giving to Interlochen is helping to protect and preserve a place and an idea where art matters.”

— Brian McCall, Liberal Arts Instructor

ANNUAL FUND QUICK FACTS

3,070
donors including
907
alumni donors

3,041
individuals and
35 organizations

912
Camp or Academy
parent donors
\$3,872,254
total annual fund gifts

Named Annual Scholarships



Named Annual Scholarships

Charles Barr Organ Scholarship
 Judith Haskell Brewer Scholarship
 Charles Brindis and Jo Ann Brindis
 Goisman Camp Scholarship
 Brookby Foundation Scholarship
 John Busby Memorial Scholarship
 Camp Gifts Scholarship
 Camp Opportunity Scholarship
 Canadian Friends of Interlochen Scholarship
 Cincinnati Opportunity Scholarship
 DeRoy Testamentary Foundation Scholarship
 Detroit Opportunity Scholarship
 Detroit Opportunity Scholarship:
 DSO Civic Youth Orchestra
 Detroit Opportunity Scholarship:
 Skillman Foundation
 Dustin's Dream Camp Scholarship
 Ella Fitzgerald Foundation Academy Scholarship
 Ella Fitzgerald Foundation Camp Scholarship

Ken and Penny Fischer Scholarship
 Fisher Family Dance Scholarship
 Harris Academy Visual Arts Scholarship
 William L. Hart Annual Trumpet Scholarship
 Joseph and Ethel Horwitz Scholarship
 Jule and Doris Hulman Interlochen
 Arts Camp Scholarship*
 Interlochen Arts Academy Relief Fund
 Interlochen Arts Camp Scholarship
 Interlochen Arts Academy Dance Scholarship*
 The Interlochen Sponsors' Scholarship
 Betty Bonisteel Johnson Camp Scholarship
 David Klein's Golden Ticket Camp Scholarship
 Kline Family Opportunity Scholarship
 Will and Joan Larson Scholarship
 Ledden Family Dance Scholarship
 Los Angeles Violin Opportunity Scholarship
 Maui Visual Arts Summer Camp Scholarship
 Memorial Scholarship

Judy Pinsof Meyer Annual Camp Scholarship in
 Dance, honoring her mother June B. Pinsof
 Miami Music Project Opportunity Scholarship
 Nelson Family Annual Camp Scholarship
 Academy Opportunity Scholarship
 Harding and Ouweleen Family Camp Scholarship
 Riverdale Children's Theatre Opportunity Scholarship
 Becky Ruthven Camp Scholarship
 Sage Foundation Scholarship
 Michelle Slater Academy Scholarship
 Tad M. and Suzanne B. Smith Scholarship
 Dude and Cathy Stephenson Musical
 Theatre Scholarship
 Camp String Scholarship
 Booth Tarkington Scholarship
 Weatherwax Foundation Scholarship
 Wege Foundation Scholarship
 Wiebener Family Orchestral Scholar
 Young Musicians Unite Scholarship*

* New scholarship since June 2019

The Interlochen Annual Fund provides additional scholarship funding for hundreds of our students each year. Thirty percent of Interlochen campers experience a life-changing summer because they receive financial assistance, and nearly 70% of Academy students enjoy an interdisciplinary, arts-focused education because of this aid.

A large portion of financial aid comes from Named Annual Scholarships, which are created and renewed annually to support and unlock young artists' potential. Donors, like those listed here, establish these scholarships with a \$10,000 or more recurring gift, or a \$5,000 recurring gift that is also supported through the donor's estate.

"The time I have here is precious and I am so grateful for your generosity. Music is such a huge part of my life and being at Interlochen is an absolute gift."

— Ella Fitzgerald Foundation Camp Scholar, Emily Mitchell (IAC 18-19)

FULFILLING A MISSION

The Ella Fitzgerald Charitable Foundation was created and funded by the First Lady of Song to help people of all races, cultures, and beliefs by fostering a love of reading and music. For nearly 20 years, the foundation has provided promising young musicians an Interlochen experience as one way of fulfilling that mission.

Since 2001, 57 young artists from across the country have flourished at Interlochen as recipients of either the Ella Fitzgerald Foundation Camp or Academy Annual Scholarship.

POWER OF THE ARTS TO CREATE HEALTHY, VIBRANT COMMUNITIES

The Brookby Foundation was established to promote community well-being, primarily by supporting endeavors that advance artistic and scientific literacy. In 2013, The Brookby Foundation recognized that investing in the energy and talent of our students was a natural alignment with their mission.

Last year, the foundation made a life-changing experience possible for five campers and one Academy student, a strong testament to their belief in the power of the arts to create healthy, vibrant communities.

"It is at Interlochen where I realize again my passion for music. I re-engage with life in a new way, love art and humanity more. I have matured and grown so much as a musician and a person. That is why I am thankful for the generosity of The Brookby Foundation."

— Peter, cello student, Camp, age 16, Grand Rapids, Mich.



Partner Camp Scholarships

This year, 75 motivated young artists found a place to discover and pursue their purpose thanks to Interlochen's Partner Camp Scholarships, a focused initiative to increase student diversity, equity, and inclusion at Interlochen Arts Camp. Through partnerships with regional educators, arts programs, and generous donors in targeted areas, students are recruited and receive financial aid to attend Camp.

Interlochen has established Partner Camp Scholarships in cities including Cincinnati, Cleveland, Detroit, Los Angeles, and Miami. Recruiting partnerships have been established with the Cincinnati Symphony Youth Orchestra Nouveau Chamber Players; Cleveland Digital Arts High School; Harmony Project in NYC; Miami Music Project; MyCincinnati; Omaha Conservatory of Music; Riverdale Children's Theatre in The Bronx; and Youth Orchestra Los Angeles.



"We are honored as a family to be a small part of these young artists' lives, where the experience of Interlochen has the power to transform lives."

— Cynthia Chormann-Hann, Trustee

THE RIVERDALE CHILDREN'S THEATRE OPPORTUNITY SCHOLARSHIP

One partnership has been funded by the Chormann Family, which includes three generations of family members engaging with Interlochen for more than four decades. The family's connection with Interlochen began in 1978 when Richard and Carolyn Chormann, from Kalamazoo, travelled with their daughter Cynthia Chormann-Hann to participate in Interlochen's All-State High School Band. Years later, Cynthia's oldest daughter found her place among the stately pines as a Junior Girls camper and was joined later by her younger sister. During the time the girls attended Interlochen Arts Camp, Richard and Carolyn became donors. Richard (Trustee Emeritus) joined the Interlochen Board of Trustees in 2010, and Cynthia (current Trustee) joined the Board in 2016.

The Chormanns watched their daughter and granddaughters thrive at Interlochen Arts Camp and wanted other creative young people to have the same opportunities. In 2018, Cynthia and the Chormann Family Foundation created a scholarship that provides full tuition for young actors from the Riverdale Children's Theatre in the Bronx to study musical theatre at Interlochen Arts Camp. In summer 2019, the scholarship supported 10 campers, one of whom returned to attend Interlochen Arts Academy in the fall.

MIAMI MUSIC PROJECT OPPORTUNITY SCHOLARSHIPS

Valerie Dillon and Dan Lewis believe deeply in the power of music education and the importance of ensuring all young people have access to it. These values underscore their support of the Miami Music Project, an organization that uses music as an instrument for social transformation, providing music education access to some of the city's students most likely to need supplementary access to music and the arts.

In 2017, Dan decided to provide Miami students who had particular passion and talent with the next step in their musical training. By generously funding the Miami Music Project Opportunity Scholarship, these young Miami musicians could enroll at Interlochen with full-tuition Camp scholarships. Three years into this partnership, the opportunities have grown. For instance, more than a dozen former Miami Music Project campers have become Academy students supported by Valerie and Dan's philanthropy.

In the summer of 2020, 56 students from Miami Music Project and another 12 students from Young Musician's Unite attended Interlochen Online. With Interlochen as an integral piece of these students' portfolios, many are already pursuing and earning admission to leading music schools.

TALENTED MUSICIANS EXCEL

47
musicians attended
Interlochen Arts Camp in 2019

7
continued to Interlochen Arts
Academy in the fall of 2019

68
musicians attended
Interlochen Online in 2020

3
continued to Interlochen Arts
Academy in the fall of 2020

"Increasing access to arts education and training across cultural and socioeconomic lines positively impacts the lives of Miami youth through music education and drives social change. The partnership with Interlochen continues to change lives and makes both Interlochen and Miami better places."

— Valerie Dillon and Dan Lewis

IPR BUILDS COMMUNITY Locally and Globally



Reporter Dan Wanschura interviews a Lake Michigan surfer in October (Photo by Beth Price Photography)

IPR is the pulse of Interlochen. Our listener-supported News and Classical Music stations connect the people of northern Michigan to each other—and the world—by broadcasting music, news, and culture, with comprehensive listener participation. The IPR signal amplifies the dynamic spirit of our campus, our alumni, and our community both down the street and around the globe.

Last year, more than 4,300 people honored the important role IPR plays in their daily lives by making a gift of support. These gifts are essential to providing quality, nuanced programming that reflects Interlochen's commitment to excellence.

Science and Conservation Desk

This year, IPR News Radio recognized the need to deepen science and conservation reporting, and asked the community to help fund this initiative. Dozens of generous donors, led by The Brookby Foundation and the Mariel Foundation, came forward to make the Science and Conservation Desk a reality. Their support made it possible to offer residents and visitors a more complete picture of the complicated ecological issues impacting Michigan's globally rare natural resources, as well as support other data-driven science journalism that impacts their everyday lives.

COVID-19 Reporting

Interest in IPR continued to rise as the global pandemic became a local crisis. IPR reporters were in the field seven days a week, developing stories representative of our rural and underserved audiences.

In response to the COVID-19 crisis, IPR created a dedicated weekly COVID-19 newsletter and a COVID-19 Tracker that details state-confirmed presumptive positive COVID-19 cases in northern Michigan. Donor support fueled these expanded efforts with an overwhelmingly successful Spring 2020 Drive for Listener Support.

IPR Leadership Annual Giving

Membership in the Producer's Circle (\$5,000+ annual gift) or Broadcaster's Circle (\$1,000+ annual gift) demonstrates a commitment to safeguard and grow the vital role IPR plays within and beyond our local community.

Mindful of the critical role listeners play in supporting IPR, The Green Brick Foundation increased its previous Producer's Circle giving during the Spring 2020 Drive to challenge fellow listeners to become supporters. The foundation made a \$10,000 leadership commitment, agreeing to match the first 100 gifts from new donors with a \$100 bonus for IPR. This generous support leveraged by the gifts of many others exemplifies the spirit of public broadcasting—and the broad-based support of our listeners.

“The Green Brick Foundation appreciates the vital role IPR plays in providing informative and entertaining programming to this area.” — The Green Brick Foundation

A LIFETIME CONNECTED TO THE LAND

One champion of the new Science and Conservation Desk this year was Larry Mawby, a pioneer in producing award-winning, internationally recognized sparkling wine in northern Michigan. Having spent a lifetime connected to the land, Larry's passion, purpose, and livelihood is directly connected to the topics covered by this reporting desk. In addition to his significant work on the IPR Community Advisory Council, Larry made a three-year leadership commitment to support the Science and Conservation Desk, translating his strong personal connection to this work into a generous gift for our entire community.

“Understanding the place we call home is critical if we are to take care of it, to steward it, properly. IPR brings me information about the people, the planet, my neighbors and neighborhood; this is vital to me as I live my life.” — Larry Mawby

A NEW HOME FOR JOURNALISTS

Barbara Alldredge has championed Interlochen as an integral community connector for decades, recognizing its unique ability to unite people of all ages and backgrounds. Involved with numerous facets of our creative hub via her late husband, Trustee Emeritus William Alldredge, Barbara has always felt a particular connection to Interlochen Public Radio.

This year, Barbara made a leadership commitment to support the current and future generation of journalists. Her generous gift will help refurbish a cabin near the radio station to provide much-needed housing for IPR interns or visiting reporters working on Science and Conservation Desk assignments. The Alldredge Cabin will provide a welcoming home for the dedicated journalists whose uncompromising work makes IPR the essential, trusted public service it is.

IPR Leadership Annual Giving

IPR PRODUCER'S CIRCLE (\$5,000 and above given to Interlochen Public Radio)

Barbara Alldredge	Mr. and Mrs. Carl M. DeFaria*	T. Michael and Joan L. Jackson	Mr. Richard M. Smith and Ms. Soon-Young Yoon
Mr. Peter Anderson	Cheryl Dendrinis	Hollye and Jeffrey Jacobs	Ms. Joanne L. Sprouse
Ron and Jane Becker	Mr. Peter F. Dendrinis	James and Paula Jo Kemler	Glynn Williams and Charlene Moore
Ms. Elaine Amacker Bridges	Paul and Wendy Greeney	H. Roemer and Constance McPhee	
Faith Adler Brown*	Dr. and Mrs. Timothy Hanley	Susan and John Paul*	
Gloria and Leith Butler	Cynthia Chormann-Hann*	Linda and Max Proffitt	
James R. Chormann	Ms. Nancy Hoagland*	Tom Quinn and Tommy Thompson	
Carolyn and Richard Chormann	Ms. Mary Hughes	Dr. Stephen Shetron	

IPR BROADCASTER'S CIRCLE (\$1,000 - \$4,999 given to Interlochen Public Radio)

Porter and Anita Abbott	Mark and Nan Dancer	Hal and Rose Higdon	John and Pamela McDonald
Fred and Helen Richter Altman	Mick and Barb DeGraeve	John and Shirley Hoagland	Mr. James A. McIntyre
Ms. Bobbi Ames	Ms. Chris Densos	Pam and Steve Horne	Mrs. Patricia A. McMahon-Eichenlaub*
Robert W. Anderson*	John and Gayle DeRuiter	Michael and Marsha Howard	Ann McPhail
Bill and Vicki Anderson	Cathleen Dodge Miller and Clark Miller*	Al and Julie Hurd	Ms. Kathryn A. Mead
Messrs. Baidas and Reeves	Bill and Pam Evans	Mr. and Mrs. Bart Ingraham*	Laura and Steve Melvin
Rory and Sonya Baker*	Caryl Ferguson*	Mr. Timothy M. Jackson*	Mr. and Mrs. Eugene Miller III
Mr. David Barger	Sue and John Fink	Brian and Jennifer Jaffe*	Dr. and Mrs. G. Robert Miller
Ms. Cheryl Bartz*	Bernard and Marilyn Finn	John J. and Margaret M. Jaqua	Ray and Maryellen Miller
Dr. Richard Beck and Ms. Valerie Harpel	Beth and Joe Fitzsimmons	Judy Jashinsky	Christopher Wolfe and Jillian Miner*
Richard and Lorraine Beers	Doris Forcum	Mr. Thomas C. Jones	Mr. James R. Modrall III
Reverend Theodore W. Beiderwieden III	Mrs. Phyllis Foster	Marana Webber Tost Charitable Fund	Nancy Monroe
James and Madge Berryhill	Mrs. Catherine Franciosi and Mr. Rodney Groleau	Mrs. Linda Kehr	Craig and Shari Morgan*
Mr. Jerry Bloom	Carl and Rondi Fry	Dr. Charles and Dolores Kelly*	Dr. and Mrs. Paul L. Morris*
Tim and Dana Boals	Carl and Eileen Ganter*	Linda and Joseph Kelly*	Bette and Benson Munger*
Mr. David Bondurant*	Martha Garber	Kevin and Trine Kelly	Ron Munson*
Richard and Barbara Bowzer	Bob and Nancy Giles	Pat and Barb Kessel*	Drs. James Musser and Camille Leugers
Judy and Kevin Boyle	Dr. and Mrs. Ward R. Gillett	Ms. Susan Kettering*	Bonnie Nescot and Tim Barr
Norton and Mary Lee Bretz	Lois Goldstein and John Heiam	Mr. David M. Kilian	Sabrina Newton
Ralph and Lorraine Brickman	Mrs. Barbara Goodearl	Charles Kinzel	Sandra Norlin
Ingrid and Edward Brophy	David and Penelope Gordon	Mrs. Lucie Kinzel	Mr. L. Andrew Norman
Dan and Kersti Bruining	Mr. Jerrold Gretzinger and Ms. Meg Staley	Jim and Kris Kunz	Dr. and Mrs. William Northway
Mrs. Margaret Bunn	Frank and Connie Hagelshaw	James Kure	Bruce and Becky Ogilvie
W. Clark and Karen Bunting	Curtis E. Hall and Susan Houseman*	Meg Lau	Martha Orloff
Mr. Tom L. Capua	Christine and David Hall	Laurie and Kevin Lavrack	Peter and Sarah Payette*
Phil and Barb Chapman	John and Kelly Hall	Hazel Lawrence	Mr. Karl Pearson
Christopher and Cynthia Coble	Byron Hanson*	Mr. and Mrs. Ward Lewis	Ms. Mary Peters
Don and Marylou Coe	Sarah Harding and Mark Ouweleen	Ms. Dency A. Lippert*	Steve and Sarah Pfeil
Donald and Sarah Cohen	Mrs. Jane Crosswell Hardwicke*	Marilyn Lufkin	David Wright and Julie Quinn
Dr. and Mrs. Michael Peter Collins	John and Judy Harnish	Greg and Stephanie Luyt	Ken Bloem and Royce Ragland*
Stephen and Sheri Constantin	Nancy M. Hedges	Mr. Donald G. MacDougall	Ms. Polly Rea
Terry and Steve Donahue Cousins	Mrs. Coggin A. Heeringa*	Dr. and Mrs. Carl G. Madien	June Rengo
Marcia Curran	Walter D. Herrick	Karl and Barbara Marsh*	James G. Reynolds and Pat Murphy
Todd Dalley		Mr. and Mrs. John W. Matz, Jr.	Drs. Barrett Rollins and Lynn White*
		Lawrence Mawby and Lois Bahle	Jim and Katie Rose
		Honnie and Dick McClear	

Becky Ruthven
Dr. Bill Scharf
Drs Jennifer Schell and Dan Bonifacio
Don and Cathy Schepers*
Mrs. Barbara Schilling
Matthew Schmidt and Kate Greene
Paul Schmuckal
Tracy and Marc Schwimmer
Ms. Karla Sherman
Mr. John R. Shreves
Mr. Edward Sihler
Mr. and Mrs. Robert A. Smart

Dr. Aaron C. Stander and
Ms. Mary K. Monteith*
Dick Steiger
Ross and Dianne Stephenson
John and Nan Strickler
Charles and Linda Svec
Dr. Gene D. Tang
Jerry R. Tejcek, DC
Mr. and Mrs. Cy Thiel
Carol and Dick Thompson
Richard and Nancy Thompson
Mark Tosiello and Michelle Urso

Stanley Towers
Mrs. Gerhild Uhl
Durette M. Upton*
Ms. Suzanne Voltz
Dr. Petra von Kulajta and
Mr. Timothy Werner
Ms. Frances Wallace
Rick and Christine Walter*
Price and Jane Watts
Mr. and Mrs. Raymond A. Weigel III
Ms. Martha West
Mr. and Mrs. Patrick Wicksall

Tim and Kathleen Wiley
John Wilkinson and
Robin Silva-Wilkinson
Mrs. Joan Williams*
Janet Wolf
Joan and Randy Woods
Mr. and Mrs. Ken Wyckoff
Judith Yates
Ms. M. Christine Young

IPR UNDERWRITERS

Addiction Treatment Services
Alfie Logo Gear
Amical
At Home Suttons Bay
Bahles Of Suttons Bay
Bay View Flooring
Becky Thatcher Designs
Bowerman Bowden Ford Clulo
and Luyt, PLC
Brilliant Books
Bud's of Interlochen
C.S. Lewis Festival
Candle Factory
Catholic Human Services
Charles Eisendrath
Charles Schwab - Traverse City
Chase Bank
Cherryland Electric Cooperative
City Opera House
Classic Interiors
Crooked Tree Arts Center
Crosshatch Center For Art & Ecology

Crystal Mountain Resort
Debra Lewis, DDS
Desmond Liggett Wealth Advisors
Devette & Ford Insurance
Dingeman & Dancer, PLC
Edson Farms Market
Enerdyne
Frankfort DDA
Garden Theater
Geofurnace
Grand Traverse Community Foundation
Grand Traverse Ophthalmology Clinics
Grass River Natural Area
Great Lakes Center For The Arts
Great Lakes Chamber Orchestra
Groundwork Center
Hall Periodontics
Harbor Springs Festival Of The Book
Honor/Onkama Building Supply
James C. Smith Fine Jewelry
John Tredway - Edward Jones
Kathy Neveu - Realtor

L. Mawby Vineyards
Local Difference
Long Lake Marina
Marathon Auto
Martha's Leelanau Table
Mary's Kitchen Port
McLaren Northern Michigan
Foundation
Michigan Trails & Greenways
Music House Museum
National Writers Series
No Spills Committee
Oryana
Petoskey Harbor Springs
Community Foundation
Preston Feather Building Centers
Pure Water Works
Ramsdell Regional Center
For The Arts
Right Brain Brewery
Roaster Jack Coffee
Safety Net

Shanty Creek Resort
State Savings Bank
Sterling Law Offices
Stormcloud Brewing
Suzy Voltz - Realtor
TC Turkey Trot
TCNewTech
Three Pines Studio
Thrivent Financial
Traverse Area Association
of Realtors
Traverse Bay Children's
Advocacy Center
Traverse City DTCA
Traverse Connect
Traverse Symphony Orchestra
Unitarian Universalist Church
of Petoskey
Village At Bay Ridge
Wares Auto Sales
West Shore Bank



President's Club

Thank you to all of our donors for making a significant impact through your philanthropy. We would like to especially recognize those leadership donors, including 17 anonymous donors, who contributed \$1,000 or more in calendar year 2019 and whose names are listed below.

DIAMOND MEMBERS (\$100,000 and above)

Barb Alldredge◊	Mrs. Joan L. Cutting*◊	Ms. Nancy Hoagland*◊	Tom Quinn and Tommy Thompson◊
Evan and Claudia Breibart	Ms. Joanne Danto*◊	Daniel R. Lewis and Valerie Dillon	Ms. Judy Dow Towsley Rumelhart
Ms. Donna Louise Brunsma*◊°	Mary Dempler°	John and Margaret Manuel*◊	and Donald Rumelhart*◊
James R. Chormann◊	Mohamed El-Erian	Drs. William B. and Yvonne C. Martin◊	Mrs. Norma Shaw°
Carolyn and Richard Chormann◊	Mrs. Phyllis Foster	Mr. and Mrs. Phillip J. Meek◊	Claire and Jim Skinner*
Cynthia Chormann-Hann*◊	Daniel Hamann	Craig and Shari Morgan*◊	Stephen W. Stracke Estate°
Mr. Thomas H. Corson◊°	Judith Harris and Tony Woolfson*	Bill and Linda Nelson◊	Glynn Williams and Charlene Moore◊
Mr. and Mrs. Casey Cowell◊	Mr. Stephen E. Hayden*◊	Mrs. Lucile Olson◊	

PLATINUM MEMBERS (\$50,000 - \$99,999)

Chuck Andrews	Mr. David Eli Harris*◊	Amy Maguire and Frank Koptiz	Mr. Rom Portwood
Mr. Gordon F. Brunner◊	Pam and Steve Horne◊	Miette and George Michie	Mr. Gregory C. Schuler◊
Hank Dow*◊	Hollye and Jeffrey Jacobs	Rev. Dr. Linda Patrick and	Sumit Sengupta and Cassie Brooks*◊
Mrs. Pamela G. Dow Collie◊	Ms. Susan Kettering*	Rebecca Phelps*	Dr. and Mrs. Eugene Stark
Frank and Tiffany Foster	Jerry and Terri Kohl	Michael Chung Mo Poon and	Steve White
Judson and Joyce Green◊	Ann and Roger Looyenga	Anne Miu Han Chan	

GOLD MEMBERS (\$25,000 - \$49,999)

Morton and Barbara Achter*◊	Mrs. Gary P. Drew*◊	Mr. and Mrs. Gregg Alan Latterman*	Dr. Craig D. Silverton*◊
Mrs. Kristy Andrews	Mr. and Mrs. James Evola◊	Drs. Nicholas and Elaine Mischler◊	Mr. Richard M. Smith and
Hillary Burchuk (IAA '75)*◊	Barbara Hunter Foster	Mr. Steven Morgan	Ms. Soon-Young Yoon◊
Catherine J. Caplin*	Paul and Wendy Greeney◊	Mr. Thomas W. Morris*◊	Ms. Sarah L. Titus*◊
Mr. Robert Carone	Sarah Harding and Mark Ouweleen◊	Ron Munson*◊	Mrs. Sue Ann VanderPloeg
Richard and Virginia Case◊	J. William and Judy G. Ichord*◊	Mrs. Luella Rorick◊°	Candace Wiebener*◊
Joseph M. Cuzzola Family Fund of	Dr. Paul H. Jordan, Jr.◊	Becky Ruthven	
the Erie Community Foundation	Mr. and Mrs. Stuart Kline◊	David and Rebecca Schamis*◊	
Michael Dermody*◊	Christopher and Elizabeth Kojima	Tracy and Marc Schwimmer◊	

* Interlochen alumni or staff ◊ Ten consistent years of giving ° Deceased



President's Club

SILVER MEMBERS (\$10,000 - \$24,999)

Fred and Helen Richter Altman◊	Bruce Corner and Gaye Gronlund*◊	Daniel and Cynthia Kelley*◊	Miriam Sandweiss
Ms. Laura J. Andersen*◊	Kristen Courtney*◊	Dr. Charles and Dolores Kelly*◊	Michelle Slater and Dmitri Sinenko*◊
Greg and Laurie Anderson◊	Mr. and Mrs. Carl M. DeFaria*◊	Mr. and Mrs. D. Michael Kratchman◊	Cynthia Smith-Jans
Mr. Peter Anderson	Vincent DiMartino and Patti Powell*◊	Fred and Ginny Krauss◊	Larry and Izzy Francis Smith*◊
Mr. and Mrs. Keith W. Baum*◊	Elaine Douvas and Robert Sirinek*◊	Jonathan Ledden and	Julie Smith
Ms. Jeanne Elizabeth Baxtresser*	Susanne Geier	Krista Swenson Ledden*◊	Jane and Larry Solomon
David Bernstein	Mary Gerritsen and Alfred Hoffman	Tom Maiolani	Gillian Sorensen*
Kenneth C. and Carol A. Boyd	Saul Goldstein and Laura Lazarus	H. Roemer and Constance McPhee◊	Jerry and Paddy Spence*◊
Drs. Neil and Susan Bressler*◊	Alexander Jones and Catherine Haines	Kendall Mills and Mary Lloyd Mills◊	Peter and Sue Stern
Ms. Elaine Amacker Bridges◊	Mrs. Ethel Harris◊	The Min Family*◊	Dr. Sallie Streib*
Mr. Richard Goisman and	Mrs. Elizabeth L. Harrison*◊	Richard and Mary Pisarczyk◊	Mina Tulchinsky
Mrs. Jo Ann Brindis Goisman*	Jack and Martha Hicks*◊	Stephen and Bobbi Polk◊	Bruce Richard and
Dr. and Mrs. Charles Brindis*	Lisa Hofer and Brian Silver*◊	Linda and Max Proffitt◊	Beth Stoner Wiegand*◊
Faith Adler Brown*◊	Dr. and Mrs. David A. Horwitz*◊	Mr. and Mrs. Ronald J. Rich	T.J. and Hilda Wood Fund of
Gloria and Leith Butler◊	T. Michael and Joan L. Jackson◊	Drs. Barrett Rollins and Lynn White*◊	The Greater Cincinnati Foundation
Mr. and Mrs. James Chiarelli*◊	Mr. Timothy M. Jackson*◊	Dianne and J. David Rosenberg Fund of	Drs. David and Bernadine Wu*◊
Ms. Deborah J. Cohen*◊	Ms. Laura Fisher Johnson*◊	The Greater Cincinnati Foundation	Linda and Joel Zylstra
Camille Colatosti*	Neale and Rowena Jones	Mr. Harrison Rowe°	
Andrew Cordonnier*◊	Ms. Eleanor B. Keb◊	Matthew and Jennifer Rowland◊	

(\$5,000 - \$9,999)

Jeanne Blumenfeld Aaronson*◊	Cathleen Dodge Miller and	Mr. Jim Krause◊	Mr. Robert C. Scholten*
Mr. Dean W. Anderson and	Clark Miller*	John and Jean Lansing	Dr. Stephen Shetron◊
Ms. Elaine Gurian*◊	Daniel and Debra Edson◊	J.J. Leeds and Taylor Mitchell*◊	Carolyn and Jonathon Singer
Robert W. Anderson*◊	Michael and Rhonda Estes◊	Paul and Judy Lerwick	Mr. and Mrs. Tad Monnett Smith*◊
Mr. Bruce Asher◊	Kenneth and Penelope Fischer*◊	Dr. Kate Levin*◊	Ms. Joanne L. Sprouse◊
Steven and Kathryn Bandstra◊	Mrs. Isabel Fisk◊	Dr. and Mrs. Richard H. Lineback◊	Stark Family Fund of Pikes Peak
Mr. Clark W. Barnes*◊	C. Joanne Grabinski*◊	Mr. Richard Lunquist*	Community Foundation*
Charles W. Barr II◊	David and Charlotte Gray◊	Duncan and Brooke MacLean	Cathy Stephenson*◊
Margaret Bartlett*◊	Bessie I. Hamm◊	Mr. and Mrs. Mark P. Mayfield*◊	Dr. James F. Stoddard◊
Ms. Mary Frey Bennett*◊	Dr. and Mrs. Timothy Hanley◊	Carol Paine-McGovern◊	Jeanne and Edward Stroetz
Sterling and Anne Berry◊	Mr. John Martin Hein*◊	Mr. and Mrs. John McNaughton*	Duncan and Kathryn Stuart*◊
Paul Biederman	Walter D. Herrick◊	John G. and Mary E. Melvin◊	Kathleen M. Sun
Richard and Susan Bingham◊	Dr. Karen Lee Hrapkiewicz*◊	Andrew R. and Janet F. Miller	Bob and Beth Tarkington*
Ms. Ann Marie Hudson Brink*◊	Jim & Diana Huckle◊	Jeanne Murphy and John Mallon	Jerry and Marcy Tubergen◊
Susan E. Brown*	Ms. Mary Hughes	Bill and Carolyn Neale	George and Lauri Varga◊
Steve and Jeannine Chapman*◊	Martha S. Jacobi and James	Ms. Caroline R. Nelson*	Sandra Wagenfeld
Robert and Lucinda Clement*◊	Carter Cathcart*◊	Susan and John Paul*◊	John and Kim Wagner◊
Cathy Compton and Dan Butts*◊	Kaiser Sandler Family*◊	John H. Peterson and	Mike and Sara Whiting*
Cheryl Dendrinis	Mr. Jerold Seth Kayden*◊	Randy Lowe Holgate*◊	Mr. and Mrs. Patrick Wicksall◊
Mr. Peter F. Dendrinis	Andrew and Lisa Kearns	Mr. and Mrs. David C. Petrick◊	The Honorable Kurtis T. Wilder◊
Amy and Trey Devey	James and Paula Jo Kemler◊	Ken Bloem and Royce Ragland*◊	Robert and Pauline Young◊
	Pat and Barb Kessel*◊	Leslie and Walter Schmid◊	Bill Zheng and Jun Wang*◊

We sincerely appreciate the opportunity to correct any errors or omission, or change your name listing. Please contact the Advancement Office at 231.276.7623 or advancement@interlochen.org.

* Interlochen alumni or staff ◊ Ten consistent years of giving ° Deceased

W. Clement Stone Society

GOLD MEMBERS (\$2,500 - \$4,999)

Janet Alpert	Drs. Guy and Andrea Golembiewski	Mr. and Mrs. Richard F. Larkin*	Kimberly and Kevin Shea
Julie and Daniel Baumeister	Mr. and Mrs. Edward H. Graft	Hazel Lawrence	Ms. Karla Sherman
Ron and Jane Becker	Ruth Graft	John and Gloria Lyon	Gene Sittenfeld*
The Beia Family	Curtis E. Hall and Susan Houseman*	Mr. and Mrs. Michael J. Madigan	Dr. Todd Snead and Mr. Joe Cunningham*
Sue Bowen	Mrs. Coggin A. Heeringa*	Ms. Patricia Kaiser McCloud*	Dr. Ann C. Snyder*
Douglas Brown CFP	Kathryn Hess	John McGarry and Michelle Wernli*	Mr. Adam Charles Spiegel*
Dr. Leslie Ellen Brown*	Page and Dan Houser*	James and Jennifer Mesterharm	Mr. and Mrs. Paul R. Stimson
Mr. and Mrs. Brian Chandler Campbell*	Juliana and Chris Hunter	Thomas and Barbara Moore	Charles and Linda Svec
Mr. and Mrs. Ralph J. Cerny	Greg and Betsy Jacobson*	Ted Jadwin and Ellen Morris*	Adam and Elizabeth Szykiel
Nancy and Martin Chalifour*	Chuck and Laurie Jarrett*	Mr. and Mrs. Kimball Morris	Carol and Dick Thompson
Phil and Barb Chapman	Helen Hope Johns	Mr. and Mrs. Walter R. Nelson	Mr. John Touhey*
Stephen and Sheri Constantin	Barry and Susanna Johnson*	Bruce and Becky Ogilvie	Mr. and Mrs. Stephen E. Upton
Ruth and Anthony D'Eredita	Ms. Liz Johnson*	Stephen and Deona Paine	Mrs. Lori Jane Vickers*
Richard and Bonnie Denton*	Marana Webber Tost Charitable Fund	Patty Pelizzari	Mr. and Mrs. Leo Voglrieder
Ms. Dede Duson*	Mr. Loren B. Kayfetz*	Bob and Martha Pierce	Andy and Elizabeth Walters
The Emery Family	Mrs. George R. Kempton	Mr. Michael Poehlman	Mr. and Mrs. Raymond A. Weigel III
Mr. and Mrs. Robert Fehrmann	Jeffrey and Julie Kimpton*	Mr. and Mrs. David Scott Rhind*	Don and Ginny Williams
Alan J. Garber Trust*	Mr. Carl W. Koivuniemi and Mr. Paul Burkhardt*	Mrs. Marcia Rose	Rex and Nan Winter
Ana Gasteyer and Charles McKittrick*	Mary E. Kropp-Benton and Steve Benton	Drs Jennifer Schell and Dan Bonifacio	Jack and Carol Wixed
Dr. and Mrs. Ward R. Gillett		Don and Cathy Schepers*	Joan and Randy Woods
		Mr. and Mrs. Ken Schmidt	

SILVER MEMBERS (\$1,000 - \$2,499)

Porter and Anita Abbott	Ms. Susan Ruth Batt*	Ueli and Janice Binkert*	Frank and Sharon Bustamante
Mrs. Dixie Behr Addington*	Mr. and Mrs. William G. Batt	Mr. Jerry Bloom	Mr. Tom L. Capua
Ms. Duffie A. Adelson*	Betty R. Baugh	Tim and Dana Boals	Cecily Carter
Wilbur and Janette Albrecht*	Ginny and Scott Beall	Shauna and John Bogley*	Neil and Mary Carter
Sheila and Gary Alden	Matthew and Anne Bean	Susan Bomier and Daniel Stricof*	Jessica Cattelino and Noah Zatz*
Ms. Dorothy Alig	Dr. Richard Beck and Ms. Valerie Harpel	Mr. David Bondurant*	Kamlesh and Roma Chandiramani
Michael Allen and Eun-Mi Shim	Mr. and Mrs. William Beck	Richard and Barbara Bowzer	Lawrence and Barbara Clarkson*
David and Jeneen Hollenberg Almdale*	Richard and Lorraine Beers	Judy and Kevin Boyle	Christopher and Cynthia Coble
Mrs. Jacquelyn Amenson	Reverend Theodore W. Beiderwieden III	Dr. Mac Brachman	Don and Marylou Coe
Mr. and Mrs. Hamilton Amer	Elaine I. Bell	Michael and Adrienne Bresler*	Mr. and Mrs. Don V. Cogman
Ms. Bobbi Ames	Jeffrey B. and Kathleen Bell	Norton and Mary Lee Bretz	Donald and Sarah Cohen
Seth Ammerman, MD*	Mr. Lawrence Bell	Mr. and Mrs. C. Andrew Brickman	Dr. and Mrs. Michael Peter Collins
Bill and Vicki Anderson	Mr. and Mrs. Richard Bellingham	Ralph and Lorraine Brickman	Christopher Abissi and Gail Comer
Messrs. Baidas and Reeves	Scott and Laura Berman	Dr. Roberta Brokaw*	Susan and Peter Constantin
Mr. and Mrs. Bruce W. Baker	Liz and Jon Bernreuter*	Ingrid and Edward Brophy	Howard and Mary Cook
Mr. John Douglas Baker*	Jeff and Ruth Bernstein	Sharon Brown-Sweeney and Patrick Sweeney*	Mr. Daniel P. Corrigan
Rory and Sonya Baker*	James and Madge Berryhill	Dan and Kersti Bruining	Terry and Steve Donahue Cousins
Mr. and Mrs. Ronald C. Baldwin	Ken and Judy Betz	Mr. Vincent Bryson*	Hal and Jean Craig Flynn*
Mr. Mark J. Baleja	Katherine Beyda and Michael Amundson	Mrs. Margaret Bunn	Anneliese Festersen Crawford and Bob Crawford*
Dr. and Mrs. Peter Rosner Bankoff*	Mr. and Mrs. Jerry H. Bilik*	W. Clark and Karen Bunting	Kevin Crowell and Janet Leong*
Mr. David Barger		Kenneth J. Burger	Marcia Curran
Ms. Cheryl Bartz*		Jim Burlin	Todd Dalley

W. Clement Stone Society

Mark and Nan Dancer	Mrs. Eleanor A. Golden	Janet Horn and Alan Yuspeh*	Mr. Garry Michael Kvistad*
Jessica Davis	William R. Golden Family	Barbara and Donald Hosmer*	Lawrence Larson
Ms. Portia Dean	Lois Goldstein and John Heiam	Jean Panchuk-Howard*	Meg Lau
Mick and Barb DeGraeve	Mr. Michael Good*	Michael and Marsha Howard	Laurie and Kevin Lavrack
Ms. Chris Denno	Mrs. Barbara Goodearl	David and Penelope Gordon	Dr. and Mrs. Andrew Lee*
John and Gayle DeRuiter	Roberta Gordon*	Al and Julie Hurd	Dr. David Lai Lee*
Mr. and Mrs. George W. Diehl*	Jeff Green and Susan Dunn Green	Kim Huskey*	David and Patricia Leege
Ms. Lorraine Dillon	Mrs. Crystal Gregg*	Mr. and Mrs. Bart Ingraham*	Millicent E. Leenhouts
Dr. Susan Donner	Mr. Jerrold Gretzinger and Ms. Meg Staley	Jeni Jo Jackson	Mr. and Mrs. Allen Stanley Leet*
Patricia Ternes Dore*	John J. and Margaret M. Jaqua	Brian and Jennifer Jaffe*	Ruth L. Leonard
Mrs. Nancy L. Dotlo*	Judy Jashinsky	John J. and Margaret M. Jaqua	Mark and Juliana Leslie
Nancy and Berkley Duck	Dorothy A. Johnson	Edgar H. Johnson	Kristi and Sherman Lewis*
Sally and Jim Dutton	Mr. and Mrs. Timothy Johnson	Mr. and Mrs. William D. Johnson	Richard and Sally Lewis*
Mr. and Mrs. J. Christopher Eagan	Mr. Jake Gudmundsen*	Eric and Elizabeth Gutt	Mr. and Mrs. Ward Lewis
Helen Edgington	Dr. Margaret E. Gustafson*	Frank and Connie Hagelshaw	John and Cynthia Lhost
Douglas R. Eicher*	Mr. Lawrence E. Jones	Christine and David Hall	David and Jan Libengood*
Ms. Carol Brown Eilber*	Mr. Thomas C. Jones	John and Kelly Hall	Ms. Dency A. Lippert*
Mr. Charles R. Eilber*	Mr. Thomas O'Paty Jones*	Dan and Pam Hann*	Mr. Robert R. Litle
Ms. Janet Susan Eilber*	V. Stewart and Connie Jose*	Byron Hanson*	Scott and Vickie Lizenby
Richard and Elizabeth Eisenberg*	William and Jackie Joyner	Craig Hanson	Dr. and Mrs. Michael London
William Encherman	Dr. and Mrs. Edward Kalat*	Mrs. Jane Crosswell Hardwicke*	Mr. Bruce A. Loomis
Bill and Pam Evans	Terry Eder Kaufman and Gene Kaufman*	Dr. Mary Beth Hardwicke	Drs. Peter Lucas and Linda McAllister
Drs. Myra and Robert Fall	Laura Kaufmann Arst and Gregg Arst*	Mr. and Mrs. Dale Arthur Harmelink*	Marilyn Luffkin
Marjorie and Walter Farrell*	Mr. and Mrs. George J. Kausler	John and Judy Harnish	David and Carol Luhman
Caryl Ferguson*	Mrs. Linda Kehr	Ms. Mary M. Harrison	Stephanie Luyt
Robert Feyer and Marsha Cohen*	Ms. Jan Reinhart Kelley*	Neil and Annmarie Hawkins	Mr. Scott David Lyons*
Sue and John Fink	Linda and Joseph Kelly*	John and Virginia Hecker*	Mr. Donald G. MacDougall
Bernard and Marilyn Finn	Kevin and Trine Kelly	Nancy M. Hedges	Wayne Mackie
Ms. Audrey Fisch	Mrs. Mary Kenny*	Christine Cole and Matthew Heerema	Dr. and Mrs. Carl G. Madion
Catherine L. Fischer*	Stephen and Ethel Kikoler*	Mr. Allan Heinberg*	Cindy and Steve Magera
Mr. and Mrs. Jeffrey E. Fisher	Mr. David M. Kilian	Harry and Marsha Heinkele*	Karl and Barbara Marsh*
Beth and Joe Fitzsimmons	Hyung Kook Kim and Yongchae Lee	Barbara Heller*	Mr. John Ruder Mason*
Mr. and Mrs. David L. Fleisher	Jennifer King-Wilson and Richard Madeira	J. Stephen and Lisa L. Henderson*	Mr. and Mrs. John W. Matz, Jr.
Richard Fontes	Charles Kinzel	Mark Hepler and Kimberly Purdy	Lawrence Mawby and Lois Bahle
Doris Forcum	Mr. James A. McIntyre	Paula and Kenneth Herbert*	Joseph and Terri McCarthy*
Anthony and Frances Fortuna	Mr. Jack Allen McKimmy*	Hal and Rose Higdon	Honnie and Dick McClear
Mrs. Catherine Franciosi and Mr. Rodney Groleau	Mrs. Patricia A. McMahon-Eichenlaub*	John G. Hildebrand*	John and Pamela McDonald
Nicole Fitzhugh	Ann McPhail	Leigh Hinkamp	Patty and Mark McGrath
Kip and Ann Frautschi	Ms. Kathryn A. Mead	John and Shirley Hoagland	Mr. James A. McIntyre
Joyce and Thomas Freiwald*	Laura and Steve Melvin	Walter Hoegy	Mr. Jack Allen McKimmy*
Ms. Rachel Friedman*	Ms. Mary-Ann Metrick*	David and Deborah Holloway	Mrs. Patricia A. McMahon-Eichenlaub*
Carl and Rondi Fry	Ms. Susan E. Michener	Heidi Holman	Ann McPhail
Carl and Eileen Ganter*	Stephen B. Milbauer*	Gary J. Holt*	Ms. Kathryn A. Mead
Martha Garber	Mr. and Mrs. Eugene Miller III	Mrs. Carol Honigberg	Laura and Steve Melvin
Mr. and Mrs. David C. Garlock*		Wally and Marie Hooper	Ms. Mary-Ann Metrick*
Bob and Nancy Giles		Cindy Hoorn*	Ms. Susan E. Michener
Mr. Mark Girardin			Stephen B. Milbauer*

Dr. and Mrs. G. Robert Miller♦
Patrick Miller
Ray and Maryellen Miller♦
The William G. Miller III Family♦
Jay and Jennifer Mills*
Christopher Wolfe and Jillian Miner*
Melanie and R. John Miner♦
Bob Mintzer and Carla Poole*
Mr. James R. Modrall III♦
Ms. Paula Dodez Moeckel*
Nancy Monroe
Mrs. Loren Mansbach Moore*♦
Mrs. Carol Morley Beck
Cheryl Morley
Dr. and Mrs. Paul L. Morris*♦
Beth and Dan Mosher
Mike and Kathy Moyer♦
Eric and Amy Jo Mueller♦
Bette and Benson Munger*
Drs. James Musser and
Camille Leugers
Marti and Pierce Myers
Mr. and Mrs. R. Nawrocki♦
Sharon and David Neff*♦
Bonnie Nescot and Tim Barr♦
Bob Neustadt*
Sabrina Newton♦
Kwai NG
Keith and Kirstin Nielson
Sandra Norlin♦
Mr. L. Andrew Norman♦
Dr. and Mrs. William Northway♦
Ms. Judith E. O'Brien*♦
Jennifer and Sean O'Brien
Ms. Laurie L. Oldford
Maggey and David Oplinger*
Martha Orloff♦
Dr. Carol Ebert Oseroff*♦
Michael Ouzounian and
Trish Rogers*♦
Mark Pattis♦
Peter and Sarah Payette*♦
Mr. Karl Pearson♦
Rodolfo and Margaret Perez♦
Ms. Mary Peters♦
Steve and Sarah Pfeil♦
John and Kathy Polanski
Mrs. Julia Poole*
Ms. Natalie Potter*

Mrs. June Prein♦
Gus and Jennifer Puryear
Jack Putnam♦
George and Carol Quarderer♦
David Wright and Julie Quinn♦
Mr. and Mrs. James J. Radabaugh♦
John H. Ray♦
Ms. Polly Rea♦
Mr. Daniel F. Remahl♦
June Rengo♦
Mr. Luis E. Resto*
Dr. C. Winton Reynolds III and
Ms. Lauren Zachry-Reynolds*
James G. Reynolds and
Pat Murphy
Lynnette Rhodes
Mr. Jeremy Michael Robb*♦
Mr. Carl Anderson Roberts*♦
Jane Robinson
Ms. Mitzi Robinson
Jim and Katie Rose♦
Mr. and Mrs. Thomas Rose*
Paul and Peggy Rowley*♦
Michael Ruch
Mr. Daniel Sandberg*
Ross and Kerry Satterwhite♦
Dr. Bill Scharf♦
Lisa and Thomas Schermerhorn♦
Mrs. Barbara Schilling
Matthew Schmidt and Kate Greene♦
Paul Schmuckal♦
Eric and Therese Schneider*♦
Peter and Sharon Schuur*
Steve and Joy Schwarting
Ms. Stephanie Scott*
Pam and David Seabury♦
Delta Enterprise Corp. -
Mr. Joseph Shamie
Michael and Sally Shaw♦
Na Shen and Yong Wang
Mr. John R. Shreves♦
Kathleen and Matthew Siegel
Mr. Edward Sihler
Jill and Milton Simonds
Ms. Ann E. Skory♦
Mr. and Mrs. Robert A. Smart♦
Mr. Henry Charles Smith*
Dr. Martha L. Smith♦
Van P. and Margaret A. Smith♦

Mr. Peter Gregory Sotos*
Drs. Alfred Spector and Rhonda Kost
Jonah Speidel*
Dr. Aaron C. Stander and
Ms. Mary K. Monteith*♦
Mr. Bruce Warner Stark*
Debby Starnes and Sons*♦
Mr. and Mrs. Donald Stearns
Mr. and Mrs. Christopher J. Steffen♦
Mr. and Mrs. William C. Stege♦
Dick Steiger♦
Dr. Marion Letvin Stein♦
Jim and Beth Stephens
Ross and Dianne Stephenson♦
Dr. Donald Scott Stepita*
Dennis and Sandra Stockemer
Lawrence B. Stone
Mr. Nicholas Alan Stovall*
Bruce and Jane Stowe♦
John and Nan Strickler♦
Ms. Laura Strong*♦
Mr. Patrick Szymanski and
Ms. Margery Lieber♦
Gina M. Tabachki and
Sonny Lindner*♦
Dr. Gene D. Tang♦
Jerry R. Tejcek, DC♦
Mr. and Mrs. Cy Thiel♦
Mr. and Mrs. Bill Thom
Robin Aboosamra and
Gregory Thomas
Herm and Laurie Thomas♦
Mr. Laurence W. Thomas*♦
Richard and Nancy Thompson♦
Mr. and Mrs. John A. Thorne♦
John and Doris Toher♦
Mark Tosiello and Michelle Urso♦
Stanley Towers
Mr. and Mrs. Carl E. Tretter*♦
John and Penny Tropman♦
Richard and Anne Tryon♦
Ellen and William Turchyn
David and Joanne Turner*♦
Mr. and Mrs. Roger John Tuuk*♦
Mrs. Gerhild Uhl♦
Durette M. Upton*♦
Ben and Donica Van Voorhees*
Mr. Douglas VanZoeren and
Ms. Patricia Markovich*♦

Jan VanDenburg♦
Stephen Vann*♦
Gerald and Teresa Varani♦
Mr. Peter Vernia*
Mr. and Mrs. Timothy D. Vick*♦
Ms. Suzanne Voltz♦
Dr. Petra von Kulajta and
Mr. Timothy Werner♦
Ms. Frances Wallace♦
Rick and Christine Walter*♦
Kent and Nancy Walton♦
Mr. and Mrs. Joe Wang
Ms. Marcia Ward*♦
Rosemary and Thomas Waring
Gary Wasserman
Price and Jane Watts♦
Mr. and Mrs. Kevin Weidenbaum♦
Elisabeth Morrow and
Ben Weinberg*♦
Ms. Jennifer Lynn Wesling*♦
Ms. Martha West
Mr. and Mrs. Tim L. Westbay♦
Mr. James Westlake
Dr. Patricia Anne Wetzel*
Ms. Anne Elizabeth Wharton*
Rod and Amelia Whitbeck
Mrs. Evangeline White♦
Ms. Diane Wilbur♦
Tim and Kathleen Wiley♦
John Wilkinson and
Robin Silva-Wilkinson♦
Mrs. Mickey Wilkinson♦
Mrs. Joan Williams*♦
Diane Holcomb Wilshere and
Kevin Wilshere*♦
Janet Wolf♦
Drs. Douglas and Margo Woll♦
Dale and Lorraine Helm Wordelman*♦
Mr. and Mrs. Ken Wyckoff♦
Mrs. Mary Yarbrough
Judith Yates♦
John and Pamela Yeager♦
Ms. M. Christine Young♦
Mr. and Mrs. Michael Young
Mrs. Martha Zahn♦
Margaret Zhang*

Gifts were given by donors in honor or memory of the following:

In memory of John R. Adams and in
honor of Thom Paulson
Sylvia Adler
Dean Anderson
Edward Anderson
Waldie Anderson
Robert "Ed" Anderson
Judith Andrews
Asch and Christina
Charles W. Attwood
Randy Bank
Robert Beaupre
Benjamin Beckman
Margaret "Super Tour Guide" Beery
Jennifer and Dan Benbow
Alcestis Bishop Perry
Roberta Bolig
Jeffrey Bond Smith
Bill Borglin
Dorothy Borst
James Boyk
Shirley Brashler
Dr. Neil Bressler
June Avis Bro
William Buchbinder
Caroline
Jerry Cerny
Blanche, Jerry and Bill Cerny
Eric (Rick) Charles Culver
Ellen Chew
Charles Clark
Mr. Max Clayton
Mike and Sally Collins
Katherine Cooke and Michael Lowenstein
Thomas H. Corson
Dick Crampton
Alexander D. Crosett III and
Ranier A. Crosett
Katherine Rowe (Crowell),
Elizabeth Crowell & Vivian Crowell
Mary Crull
Emily and Michael Culler
Ann M. and Christopher J. Cuzzola
Denise Daily
Kenneth V. Dake, Sr.
Clarence Frank David
Mark Desautels
In memory and honor of your amazing
mom, Nancy DeWeese, who loved IPR

Gary and Sandy Drew
Earl Dryden
Elmer Dunham
Lucile Dunham
Sonya Ewing
Martin Fako
Roger Favorite
Dr. Katie Lynn Fellman
Anneliese Festersen Crawford's birthday
Bobbie Fields
Elaine Janet Fletcher
Susan Elizabeth Flynn
Wendy Foreman
David Foster
Kenneth Free
Janet C. and Edward D. Friedman
Joseph Garipoli
Mrs. Dennis Gersheson
Philipp Gillis
Dolores Gimbose Turner
Christy Goldner, in honor of her
Bat Mitzvah
Mary Gonzales
Mrs. Frederick Greenspan, In honor
of her recovery
David Grimm
Grandfather, Norris Grover, the early
and longtime engineer for WIAA
Alfred E. Haffner
Byron Hanson
Jim Harvey and Dick Fiegel
William Hendershot
John Hilliard
Harry Wayne Hoffman Jr.
Russell & Annabelle Holcomb
David Holland
Joan Holland; our children, IAA alumni
Hannah (2018) and Jordan (2016);
and in memory of Doug Long -
Michael Allen and Eun-Mi Shim
Marion Hoorwitz's 90th Birthday
Pam Horne
Madeline Horton
Ali Humes, class of 2012
Tito, Jennie, James & Florence Intravaia
Michael Jackson of TC
Roger E. and Mary Jane Jacobi
Jeffrey Jacobs in honor of your birthday
Diana Jaensch

Steven Lee Johnson
Joseph Kaminsky
Henry Kavett
Helen Kaye
Damon Keith
George Kempton
Jeremy Kempton
Janice Kiyomi Kuse Hamilton
Jeanette Koch
Melvin S. Larimer
Dr Ples Latson Kujawa
Temmy Lehman's sister Anita
Dr. Irwin Lehroff's 90th Birthday
Betsy LePoidevin
Norman Letvin
Hildegarde Lewis
Katherine Light
Evelyn Livingston
Doug Long
Pat Lottie
Glen Lottie
Antoinette (Toni) Lyon
Herbert & Nettie Lyon
Carl Lystad
Cristian Macelaru
Philip and Coral Lee Mason
Yolanda Matthews
Margaret Louise Mautz Chadwell
Aaron Leonard McCloud
Dana S. McCormick '91
Wm. S. McIlrath
JulieAnne McKnight
Our son, Blair McMillen
Jon Mead and Kay Boyne
Leon Michael
Lenora Milliken
Michael Mittelstaedt, Andy Hiss,
and Lesley Tye
Francis Joseph "Frank" Montanaro
Thomas Morris
Robert J. Murphy
Ed Newcomb
Betty Nixon
Jessye Norman
Eric Norton III
Sandra S. (Gough) Oldford
Gertrude Olsen
Helen Osterlin

Wedding of Minsok Pak and
Carrie Shuchart
Elaine Parker Shaw
Shirley Parley
Katie Parvu
In honor of Thom Paulson and
memory of Ed Catton
Stuart Pearlman
George Petritz
Janet Pfluecke
Dane Philipsen and the Oboe Studio
Jim Pidgeon
Marguerite "Midge" Plumley
Donna "Pitter" Pratt
Dr. Lawrence Probes
Zigi Quastler
Lily Quint
Yoko Redfern
David Rees / Elisabeth Dessauer-Rees/
Howard Hintze
Richard S. Richter
Vilette Ross
Daniel Ruggles
Thomas C. Sabin
Barbara Sandys
Jenna Scheub
Tamara Schmiege
Cynthia Schofield, PhD
Elisabeth Schreiber
Arthur Schwartz
Norman Schweikert and
David Neubauer
Claire Sesko
Kenneth Shaw
Pat Sheafor
Gene and Mary Siddall
Reta Sikkenga
Ann Skory
James Skura
Diane Solomon
Stephen Solomon
Janice Spencer
William Spencer
Oliver Springsteen's 15th birthday
Nancy Stagnitta
Isabella Starbuck Mascheroni
Nathan and Christie Stark
Marion Stark Gringorten
Bernice Steiner

Recognition and Memorial Gifts – continued

Clarence "Dude" Stephenson	Ervin Tamminga	James Vculek	Taylor Wizner
Honorary Austin Stewart	Ben and Amy Taylor	Al Vigland	Sue Ann Wolski
Ronald Stoops	Margaret Ann Taylor	Cindy Wang	Amy Wordelman
Jack and Fran Strait	In celebration of Pete Thompson	Dorothy Watkins	Essential Workers
Daniel E. Sundt	and Rebecca Terry	John R. Weathery	Carol Yarbrough
Sigurd Swanson	Perry Townsend	William and Doris Weissler	Bonita E. Young
Nancy Swearingen	Julie Ann (Shaw) Trudeau	Martin Wilner	Mr. and Mrs. Stephen Ziff's Granddaughter

CORRECTION: The 2019 Annual Report inadvertently omitted these honorees. We apologize for this oversight.

Judith Andrews	Bill Bernstein and Abby Bence	Steve and Sheri Constantin	Dana Flatow and Justin Hsu
Jordan Aronson	in celebration of their marriage	Katherine Cooke, Ariel and	E. Ashley Fogle
Karen Downing Asher	Roberta Bolig	Michael Lowenstern	James Franzen
Charles W. Attwood	Sophia Bondi	Mimi Denton Bravar	Jim and Shirley Franzen
Marilyn and Virgil Baker	Carl & Mary Lou Borsodi	In honor of Trey and Amy Devey's	Esther Gardner
Landon Bassett	Dorothy Borst	25th Wedding Anniversary	Mary Gonzales
Ann Beach	A. David Bos	Trey Devey	Mrs. David Grossman's Birthday
Blanche, Jerry and Bill Cerny	Barbara Botello	Mary Ann Drury	Mary Ann Hacker
Jennifer and Dan Benbow	Lisa Anne Botnick	Bobbie Edwards	Byron and Ann Hanson Scholarship Fund
Laurel A. Benn-Otte	Al Bottenhorn	Katie Lynn Fellman	Gracie Hardy Smith
Mr. and Mrs. Herman Berg	Joshua Bulos	Dick Fiegel	Jim Harvey
	Caplin Foundation	Guillermo Figueroa (IAC '67-70)	Draylen Mason
	Ellen Chew	Mrs. Phillip Fisher	

Foundations, Corporations, and Organizations

\$100,000 and above

Allen Foundation
The R.B. Annis Educational Foundation
Edmund F. and Virginia B. Ball Foundation, Inc. ♦
Bessemer Trust
Canadian Friends of Interlochen ♦
Chormann Family Foundation ♦
Corporation for Public Broadcasting ♦
Corson Family Foundation, Inc. ♦
Allen B. Cutting Foundation ♦
Fidelity Charitable Gift Fund ♦
Foster Family Foundation
Global Village Charitable Trust
Herbert H. and Grace A. Dow Foundation
Marvin and Betty Danto Family Foundation
Miami International Festival Inc
Michigan Council for Arts & Cultural Affairs ♦
Morgan Stanley Global Impact
Hamann Family Fund of the Omaha Community Foundation
Reliance Aerotech Inc.
Schwab Fund for Charitable Giving ♦

\$50,000 - \$99,999

Herbert H. and Barbara C. Dow Foundation ♦
Jerry & Terri Kohl Family Foundation
Kettering Family Philanthropies
M.E.H. Foundation
The Mallory Foundation ♦
Marsh Law Firm, PLLC
Vanguard Charitable Endowment Program ♦
Matilda R. Wilson Fund ♦
Wilsonart

\$25,000 - \$49,999

Edith Blodgett Legacy Fund of The Brookby Foundation ♦
Caplin Foundation
CASERVE Foundation ♦
The Robert and Patricia Colby Foundation
DeRoy Testamentary Foundation ♦
Goldman Sachs Philanthropy Fund
J R E Enterprises, LLC
John P. Kavooras Charitable Trust
The Kline Family Foundation ♦
Mariel Foundation ♦

State of Michigan Department of State Police
Miriam U. Hoover Foundation
The Pinkerton Foundation ♦
Santa Barbara Foundation
The Skillman Foundation ♦

\$10,000 - \$24,999

Apple, Inc.
Bank of America Charitable Gift Fund
Bonisteel Foundation
Charles and Rita Anderson Foundation
Judith Haskell Brewer Fund of The Community Foundation for a greater Richmond
Harrison Family Fund of the Douglas County Community Foundation
Dustin's Dream Inc.
Ella Fitzgerald Charitable Foundation ♦
Ann & Gordon Getty Foundation ♦
The Greater Cincinnati Foundation ♦
The Greater Kansas City Community Foundation ♦
Grand Traverse Regional Community Foundation ♦

Higher Ground Foundation Inc.
Howard Miller Company ♦
Howard Miller Foundation
Jenny H. Krauss and Otto F. Krauss Charitable Foundation Trust
Jephson Educational Trusts
Benard L. Maas Foundation
Mae E. Demmer Charitable Trust
Milton Harris Investments Limited
National Endowment For The Arts ♦
Peco Foundation ♦
The Richard and Mary Pisarczyk Foundation ♦
The Ralph L. and Winifred E. Polk Foundation ♦
Hamer D. and Phyllis C. Shafer Foundation ♦
Swilcan Properties LLC
The Frances R. Luther Charitable Trust
United Jewish Foundation ♦
Walt Disney Company Foundation

Foundations, Corporations, and Organizations – continued

\$5,000 - \$9,999

American Endowment Foundation
American Proficiency Institute, Inc.
Arts Midwest ♦
Attwood Foundation
Ayco Charitable Foundation
Margaret & Marshall Bartlett Family Foundation ♦
The Benevity Community Impact Fund
Charitable Adult Rides & Service Inc.
Cherry Capital Airport
The Chicago Community Foundation ♦
Jack, Evelyn & Richard Cole Family Foundation ♦
Crystal Mountain Resort & Spa ♦
Dick & Betsy DeVos Foundation
The Benson & Edith Ford Fund ♦
Frey Foundation ♦
Generations Fund ♦
Grand Rapids Community Foundation ♦
Green Brick Foundation
Hagerty ♦
Jerry & Marcia Tubergen Foundation ♦
Jim and Diana Huckle Family Foundation
Macauley and Helen Dow Whiting Foundation
North Texas National Christian Foundation
David and Ellen Petrick Foundation ♦
Philosopher's Information Center ♦
Pikes Peak Community Foundation

Steven & Kathryn Bandstra Foundation ♦
Tom's Food Markets, Inc. ♦
\$1,000 - \$4,999
AmazonSmile Foundation
Batt Family Foundation ♦
Bay Area Transportation Authority
Bill Marsh Auto Group
Blue Cross/Blue Shield of Michigan ♦
Brian Kirk Music LLC
Brooklyn Community Foundation
Douglas Brown & Associates LLC
Caeli Communications, LLC
Carnegie Mellon University School of Music
Charles Schwab Corporation Foundation
The Cheese Lady TC
Chevron Humankind
Coca-Cola Company Matchin Gifts Program ♦
Coldwell Banker Schmidt Realtors
The Columbus Foundation ♦
Comerica Bank
Community Foundation of Greater Chattanooga
The Community Foundation of Louisville Inc. ♦
Community Foundation of Sarasota
Eagan Family Foundation
Edgar Hare Johnson Trust

F & J S Fund, Inc.
Fruehauf Foundation ♦
Grand Haven Area Community Foundation ♦
Greenleaf Trust
The Hall Houseman Family Foundation
Helen Edgington Properties LLC
IBM Corporation ♦
Indian River Community Foundation
Innovia Foundation
Jacobson Associates ♦
John J. Fruitschi Family Foundation
Kitsap Community Foundation
Kvistad Foundation
Longy School of Music of Bard College
Lumina Foundation for Education, Inc.
M.B. & Edna Zale Foundation
Micheli Family Foundation
Microsoft Corporation ♦
The Minneapolis Foundation
Morley Foundation ♦
Charles Stewart Mott Foundation ♦
National Christian Foundation, Indiana
National Federation of Music Clubs ♦
Network For Good ♦
North Lake Foundation
Northwestern Mutual Life Foundation Inc. ♦
Oliver Family Foundation

The Oregon Community Foundation
The Patis Family Foundation ♦
Pepsi-Cola Bottling Group ♦
Petoskey-Harbor Springs Area Community Foundation ♦
Ed & June Prein Foundation ♦
Prout Financial Design
Raymond James Charitable Endowment Fund
Renaissance Charitable Foundation Inc.
Rite-Hite Holding Corporation
River City Foundation ♦
Robet Foundation, Inc.
The Schloss Family Foundation Inc
Sigma Alpha Iota Philanthropies, Inc. ♦
Strada Education Network
Stricof Family Foundation
The Music Law Group LLC
The Stephen E. Upton & Elizabeth Vial Upton Charitable Lead Trust
Theo B. Bean Foundation Inc.
Thom Family Foundation
Trust Works Collective LLC
University of Colorado Boulder College of Music
The Weigel Family Foundation
Wells Fargo Foundation ♦
Windemuller, Inc. ♦
The Woll-Yellin Family Foundation ♦
R M Young Company ♦

Matching Gifts

The following corporations and foundations gave to Interlochen through their matching gift programs:

Albemarle Foundation	Hallmark Cards Inc.	Lumina Foundation for Education, Inc.	PNC Foundation
Apple, Inc.	Hewlett Packard Enterprise Foundation	Charles Stewart Mott Foundation	Suttons Bay Rotary Club
Bank of America Charitable Gift Fund	ITW Foundation	Northern Trust	Walt Disney Company Foundation
Doris Duke Charitable Foundation	Jack Kent Cooke Foundation	Northwestern Mutual Life Foundation Inc.	Wells Fargo Foundation
Eaton Corporation	Eli Lilly and Company Foundation	Piper Sandler Companies	The Williams Companies
Frankfort Rotary Club	Lilly Endowment	Pfizer Inc	

Interlochen Presents

Interlochen Presents Sponsors

Blain's Farm & Fleet
Cherry Capital Airport - TVC
Crystal Mountain Resort
Hagerty
Howard Miller Company
Kawai

Rock-It Cargo
Tom's Food Markets
Upstaging, Inc.

Interlochen Presents Media Sponsors

104.5 Bob FM
106 KHQ

107.5 FM WCCW
9610 News (CBS)
96.7 The Bull
Big Country 102.9
Black Diamond Broadcasting
MacDonald Garber Broadcasting
Midwestern Broadcasting
Classic Rock the Bear 98.1 95.3
Interlochen Public Radio
Lite 96.3

Northern Express
Rock 105 FM
The Ticker
Traverse Bay Family Magazine
Traverse City Business News
Traverse City Record Eagle
WKLT
WTCM FM
Z-93

HERITAGE SOCIETY'S Impact Shines Forever



Interlochen believes in the power of young people to change the world. From our earliest days, Interlochen has provided life-shaping experiences to the next generation. Nowhere does this focus on the future shine brighter than through the members of the Interlochen Heritage Society.

The Heritage Society honors those generous individuals who have chosen to remember Interlochen in their estate plans. Whether through wills, charitable gift annuities, charitable remainder unitrusts, lead trusts, gifts of insurance, retirement plans, or other arrangements, Heritage Society members make provisions today that will provide opportunities for the creative change-makers of tomorrow.

LIFE-CHANGING EXPERIENCES

Arts Camp alumnus Bob Scholten is as engaged with Interlochen today as he was when he spent three pivotal summers studying trombone and continued when, ten years later, he returned to serve as summer camp staff. Through the intervening years, Bob cherished his camp memories of his time between the lakes, his love of music, and the life-long relationships that started at Interlochen.

Now retired, Bob is excited to re-engage with the place that has meant so much to him and his family. He wanted to ensure future generations of young people have similar life-changing experiences. This year, Bob joined the Heritage Society by making a provision for Interlochen in his estate to fund the Robert Scholten Endowed Camp Scholarship. To appreciate the impact of this gift during his lifetime, Bob decided to make annual contributions to begin funding the scholarship today. Generations of young artists will have their lives touched by his legacy.

“Providing for Interlochen is the best investment I’ve ever made.” — Bob Scholten

The Heritage Society

The Heritage Society recognizes donors who have honored Interlochen with planned gifts. Heritage Society members enhance the tradition of artistic and broadcasting excellence at Interlochen by supporting its future generations.

- | | | | |
|------------------------------------|---------------------------------------|---------------------------------------|--|
| Mr. and Mrs. Robert A. Alsaker | Christopher T. Cantwell* | Andrew Gerber* | Barton J. Ingraham & Gail G. Ingraham* |
| Dr. Seth David Ammerman* | Marilyn Carlson* | Dr. Beth Gilbert* | Daniel Jackson* |
| Mr. Robert Wade Anderson* | Ruth Aurand Casserly* | Mr. Randall Kerry Goff* | T. Michael and Joan L. Jackson |
| Mr. Dean W. Anderson* | Ralph and Maureen Cerny | Dr. George Goldberg* | Mr. Timothy M. Jackson* |
| Audrey Andrews* | Lawrence W. and Barbara L. Clarkson* | Mr. and Mrs. Sheldon Goodman | Ms. Emmy Jacobson |
| Charles and Laurel Angus | Mr. and Mrs. Don V. Cogman | Roberta Gordon* | Roseanne Jamrok* |
| Jon and Mary Armstrong | Deborah J. Cohen*Δ | Barbara Gordon and Bradley Gordon | Liz Johnson* |
| David and Tricia (Graham) Arthurs* | Mr. Richard F. Colker | C. Joanne Grabinski* | Mrs. Marilyn R. Johnson |
| Sheila Baker in Memory of | Eileen Hanson Combs* | Ms. Sondra Joyce Graff* | Mr. William C. Johnson |
| Dr. Russell Putnam | Mr. Fred Michael Combs* | Ms. Nancy Hancock Griffith* | Mr. and Mrs. Robert Glen Jones |
| George and Merry Ball* | Ms. Catherine L. Compton* | Miss Helen J. Grinnell | Dr. and Mrs. Paul H. Jordan, Jr. |
| Mrs. Jean Maschmeyer | Mr. and Mrs. James A. Cooper | Margie Guyot* | Mr. William Joy |
| Bardonner ('46)* | Sharon F. Cramer, Ph.D.* | Meri Gyves* | Mr. Edward W. Kahler Jr.* |
| Mr. Clark W. Barnes* | Kenneth Vaughan Dake, Jr.* | Luke Haase | John R. Kane* |
| Charles W. Barr II | Joanne Danto* | Daniel and Pamela Hann* | Daniel L. Kanter* |
| Cheryl E. Bartz*Δ | Betsy Davidson and Sheryl Coston* | Ms. Julia Hansen* | Richard A. Kaplan* |
| Kathleen Varney Bates* | Ms. Portia Dean | Michael Hansen | Ms. Jan Reinhart Kelley* |
| Walter J. and Jeanne M. Beecher* | Michael Dermody* | Ms. Judith Rachel Harris and | Dr. Charles and Delores Kelly* |
| Ms. Phyllis Gold Berenson* | Mr. John Robert DeYoung* | Mr. Tony Woolfson* | Mr. and Mrs. George R. Kempton |
| Liz and Jon Bernreuter*Δ | John and Sally Dickinson* | Mrs. Elizabeth Lindsay Harrison* | Mr. and Mrs. Bernard Kent* |
| J.G. Bertrand, MD | Mr. Robert Byron Dimmick* | Mr. David B. Hattner* | Alan R. Klispie and |
| Helga and Jerry Bilik* | Ms. Beth Susan Dochinger* | Mr. Stephen E. Hayden* | Cindy Scaruffi Klispie* |
| Mr. William Whipple Bing* | Robert and Nancy Doughty | Paul Heaton* | Carl Koivuniemi and Paul Burkhart* |
| Thomas E. and Edith M. Bletcher* | Sandra and Gary Drew* | Ms. Ruth Mary Heeler* | Mr. Robert James Lange* |
| Mr. Christopher Borgmeyer & | Ms. Julie Irene Duke* | Mrs. Coggin A. Heeringa* | Richard Larkin* |
| Dr. Christina Fuhrman* | Diane L. Dupuis* | Eleanor J. Heinz* | Judy Kutzen Levin* |
| Peter W. Bowman* | Marge Eckert* | Mr. David F. Heroy* | Richard and Sally Lewis* |
| Mr. Ted Braciak | Carl Ellenberger and Emi L. Snavely* | Mr. Walter Herrick | Ms. Jill Libman* |
| Mr. Robert E. Bracken* | Carol and Charles Emmons, Jr.* | Martha and Jack Hicks* | Ms. Louise Abigail Linden* |
| Mark J. Brandfonbrener* | Natalie Priest Yaw and Scott Erskine* | Dr. Barbara C. High | Mr. Lewis Fredric Lipnick* |
| Ms. Maureen Breen | Stephanie Glazer Ettelson* | Dr. Philip Hillstrom* | Dr. and Mrs. John Lipson* |
| Ms. Victoria Brehm* | Barbara and Gordon Evans* | Rebecca Hinks* | Arthur P. Logan* |
| Ms. Ellen Brehm* | Ann Fairhurst and Mark Cipra* | Mr. Howard H. Hintze* | Mrs. Maureen Morrison Long* |
| Marcy Jean Brenner* | Ms. Diana Jean Farran* | Mrs. Vern (Shirley) Stocklin Hipwell* | Bruce A. Loomis |
| Michael Jay Bresler* | Michael C. Faulhaber* | Ms. Naomi Hoffmeyer | Kenneth Lowenberg* |
| Ann Marie and Gregory Brink* | Jo Faulmann* | Jacqueline R. Hofto* | Kate Lunsford* |
| Eric T. Bronsky* | Dr. Michael James Finton* | Ms. Carolyn Kimball Holmquist | Carl and Carolyn Maksimowicz |
| Dr. Leslie Ellen Brown* | Kenneth and Penelope Fischer* | Gary J. Holt* | Miss Rosemary M. Malocsay* |
| Mrs. Doris A. Brucker* | Gerald B. and Catherine L. Fischer* | Barbara and Donald Hosmer* | Roy Malool |
| Gordon F. Brunner Family | Nancy Vaden Fitton* | Andy Howell and Carol HowellΔ | Malcolm Manley |
| Helen and Tony Buday | Mr. James R. Flagg | Dr. Karen Hrapkiewicz* | Laura and Christopher Martin* |
| Mrs. Dorothy B. Burke | Mr. David Foster* | Ms. Candace M. Hughes* | Drs. William B. and Yvonne C. Martin |
| Jack L. Cameron* | Jay Frost and Yuko Iida* | Julie M. and Albert E. Hurd, 3d | John Ruder Mason* |

* Interlochen alumni

Δ New Heritage Society Members

The Heritage Society – continued

Mr. and Mrs. Gary May
 Mr. and Mrs. Mark P. Mayfield*
 William J. McClintock*
 Patricia Kaiser McCloud*
 Kathy McCune*
 John McGarry and Michelle Wernli*
 Joel McNeely and Margaret Batjer*
 Nancy J. Meek
 Mr. and Mrs. Daniel A. Metrick*
 Raymond A. Miller
 Drs. Nicholas and Elaine Mischler
 Craig and Shari Morgan*
 Brian R. Morgan
 Dr. and Mrs. Paul L. Morris*
 Dr. and Mrs. Harold M. Nelson
 The Reverend Douglas
 Reed Nettleton*
 Mr. and Mrs. Myrl D. Nofziger
 Mr. and Mrs. E. George Osius*
 Kathy Wells Paauw, '77*
 Mr. Daniel Abbott Packard IV*
 Ms. Cyd Pacot
 Janet L. Paepke*
 Daniel and Barbara Palazuk*
 Cynthia Folsom and James PattersonΔ
 Mr. Lee Edward Percy*
 Susan Myers Peterson*
 Ms. Rebecca Phelps and

Rev Dr. Linda Patrick*
 Joan Pollock*
 Delmar and Ruth Proctor*
 Max and Linda Proffitt
 Leeann Ray & Kevin Graham*
 Sue Raye
 Sarah Marks Richards*
 Frank and Milli Richmond*
 Ms. Katherine Rines
 Charlotte (Lytle) Moon (Robbins)*
 Mary Agnes Roberts*
 Edward Roberts III and
 Wilma J. Patterson
 Ms. Cynthia Elayne Robertson*
 Lynn K. White and Barrett J. Rollins*
 Mr. John S. Ross, Jr. and
 Mrs. Ruth D. Ross
 Alexander G. Ruthven, II
 Becky Ruthven
 Mr. and Mrs. David Sanders
 Robert C. Scholten*
 Ms. Melinda Scott*
 Libby Parkhurst Scott*
 Mr. Stephen Shetron
 Mary DeLano Sholkovitz*
 Steven and Rachel Sindell*
 Claire Corson Skinner and
 James P. Skinner*

Van P. and Margaret A. Smith
 Larry and Isabel (Izzy) Smith*
 Dr. Martha L. Smith
 Dr. Linda Snyder*
 Mr. and Mrs. Joseph J. Sofhauser*
 James and Ann Spica*
 Arturo Steely*
 Martha Purdy Stein*
 Catherine Stephenson*
 Ms. Marjorie Stettbacher*
 Dr. Sallie Streib*
 Tom Sudinsky / Scott Sproles*
 Evy Kaplan Fischlowitz Sussman*
 Gina Maria Tabachki*
 Susan and George Tagatz*
 Allen and Ann Taylor
 Mr. David Terrell and Mrs. Diana Terrell
 Mr. Joel Test*
 Ms. Catherine-Aimee L. Thompson*
 Miss Frances Eleanor Tibbals*
 Art and Jill Tiefenbach
 Rev. Dr. Christina L. Tillotson*
 Philip and Julie Trudeau
 Randy and Patty Tucker*
 Ms. Eugenia K. Ulrich
 Mr. and Mrs. William D. Upton
 Roger and Tina Valade*
 Margaret A. Valade

Roberta Ciasullo VanMeter*
 Dr. Toni VanHandel
 Stephen Vann*
 Ms. Suzanne Voltz
 Erika D. Walker*Δ
 Anne-Marie Wall
 Ms. Suzanne Walters*
 Michael A. Waschevski*
 Ellen Elliott Weatherbee*
 Mr. and Mrs. Donald Weinberg*
 Frederick Weldy*
 Candace Wiebener*
 Mrs. Ieva Wiechmann
 Diane L. Wilbur
 The Honorable Kurtis Wilder
 Joan Williams*
 James and Susan WilsonΔ
 Carol Wilson AllenΔ
 Mr. George J. Worden*
 Mr. John Wunsch and
 Ms. Laura Wigfield*
 Naomi Yoelin*
 Ms. Shirley Young
 Dr. Elizabeth Young and
 Dr. Robert Lovell*
 Mr. Barry Zalph*
 Christine Heustis Zimmer*

* Interlochen alumni

Δ New Heritage Society Members

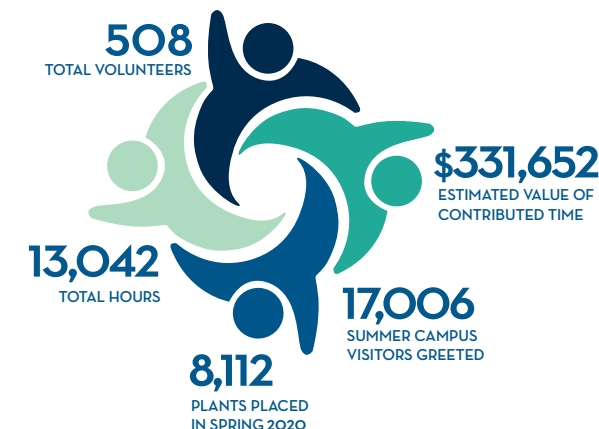
VOLUNTEERS INSPIRE Campus Community



There are endless ways to spend a week, a day, an hour. In our hectic world, there are often far more options than there are free moments. We are honored by the 508 dedicated individuals who chose to spend some of their valuable time volunteering for Interlochen this year.

Through planting flowers, giving campus tours, taking pledges at Interlochen Public Radio, crafting ballet costumes, and ushering patrons to performances at Corson, our volunteers' generous donation of time and talent illustrates their commitment to our community. Interlochen supports inspired lives, and everyone has an important role to play.

VOLUNTEER IMPACT:



VOLUNTEER OF THE YEAR: TED BEIDERWIEDEN

For a impressive third consecutive year, Ted Beiderwieden was named Volunteer of the Year with the highest number of volunteer hours on campus.

“When you are 83 and still get up each day to go to work, you must love where you work and what you do. That describes my relationship with Interlochen Center for the Arts.

Retirement gives me significantly more time to serve this place that fascinates me—for its location, its purposes, what it offers the community, and how it develops arts careers in the lives of young people.”— Ted Beiderwieden



Thank You, Volunteers!

Trudy Aardema	Chloe Braum-Bharti	Debra Davis	Stephen Fry	Charlene Hoffman	Colin Knapp	Robert McQuilkin	Jan Penney	Allison Sharp	Mark Tosiello
Coralie Ahrenskeaff	Marieta Braun	Morgan Davison	Mary Frye	Michael Hoffman	Charlotte Knoll	Judith McQuilkin	Ivelisse Perez	Bridget Shene	Vicki Trent
Kenneth Alexander	Patricia Brauning	Portia Dean	Zebulun Fulcher	James Hoffman	Natalie Koch	Michael McWilliams	Carol Peschke	Jody Sherwin	Lynn Troutman
Patricia Alexander	Evan Breibart	Gloria Dean	Dayo Garritano	Herbert Holdwick	Linda Koebert	Paul Meernik	Sarah Pfeil	Kathy Shimunek	Gretchen Uhlinger
Helen Altman	Devon Briggs	Aysel DeBakey	Jennifer Geiger	Jean Holdwick	Peter Kolodziej	Mary Terese Meernik	Steven Pfeil	Joseph Singer	Richard Valice
Fred Altman	Peter Brodhead	Julia Deemer	Alexandra George	Steve Horne	Anna Kopperud	Barbara Mendenhall	Rebecca Phelps	Rita Singer	Deborah Valice
Julie Alton	James Brouwer	Daniel DeLisi	Karen Getz	Pamela Horne	Andrew Koran	Donna Merriman	Molly Pont-Brown	Aidan Singh	Luanne Van Petten
Janece Anderson	Carol Brouwer	Robert DePrimo	Francis Geuss	Shelley Houser	Carole Kornmiller	David Meyer	Ronald Popp	Marilyn Skold	William Van Petten
Sven Anderson	Katharine Brown	Sally DePrimo	Pamela Gianola	Katherine Houston	Laverne Kowalski	Sally Meyer	Shirl Popp	Ann Skory*	Camille Vettraino
Jone Antenucci	James Brown	Amy Devey	Richard Giles	Sarah Huddleston	Janet Krieger	Matthew Meyers	Christine Potter	Jonathan Slawson	Micheal Vickery
Danielle Arens	Renee Builes	Donald Dierkes	Suzanne Gindin	Candace Hughes	Gwendolyn Kudlack	Connie Meyers	Miles Pride	Margaret Slawson	Aleksandar Vitanov
June Aydelotte	Timothy Burke	Catherine Dierkes	Frederick Gnich	Amy Humes	Vivienne Kwan	Dennis Meyers	Carolyn Priest	Geraldine Sliis	Makayla Vitous
Carol Babbitt	Cynthia Burns	Eli Diersing	Amy Gonzales	Jacob Hunter	Dashiell Kwan	Larry Miller	Delmar Proctor	Susan Smith	Rebecca Wagner
Leah Backus	Robert Buryta	Linda Diesing	Jett Gonzalez	John Ichord	Dora Lai	Ann Miller	Carolyn Purcell	Judy Smith	Ella Wahby
Richard Bader	Nancy Bush	Josephine Dillingham	Cristina Gonzalez	Judy Ichord	Karen Lake	Mary Miller	Jack Randall	Terry Smith	Janet Walker
Carol Bader	Mary Butcher	Barbara Disborough	Isadora Gonzalez	Gina Izzo	Eunice Lampkin	Anne Mills	Daniel Rankin	Caren Smith	Marcia Walters
Gary Baillod	Carolyn Caputo-McCauley	Bryce Dreeszen	Victoria Gransee	Jacqueline Jackson	Peter LaPlaca	David Min	Rosanne Ranville	Jean Snook	Paul Walters
Janet Baillod	Amy Carl	Paula Dreeszen	Tim Griffin	Thomas Jackson	Lisa Laplace	Dianne Minicucci	Julie Reisz	Ann Snyder	Robert Warner
Terry Bard	Jan Carter	Carola Drosdeck	Marlene Griffin	Sandra Jackson	Deborah Laubach	Theresa Mohr	Pedro Resendez	Sara Sokolnicki	Mary Warner
G. Bard	Mark Cerny	Madeline Duncan	Marjorie Groenwald	Roseanne Jamrok	Bruce Leach	Patrick Monahan	Kathleen Richter	Robert Sokolnicki	Juanita Watson
Keith Bartholomew	Mauricio Cespedes	Laura Dunn	Richard Groenwald	Alan Janulis	Gavin Leahy	Linda Monahan	Patrick Richter	Barbara Solomonson	Noel Watson
Skyler Bartman	Lilly Chamblin	Matthew Duvall	Gaye Gronlund	Nancy Janulis	Heather Lee	Janet Morris	Dennis Ring	Rebecca Somsel	Ellen Weatherbee
Rebecca Batey	Jeannine Chapman	Celia Ebert	Vincenzo Guandolo	Lynda Jarrold	Adrien Lee-Rossing	Michael Moyer	Karen Ring	Steven Somsel	Gayla Weaver
Katherine Baxter	Stephen Chapman	Charles Ebinger	Susan Gugel	Matthew Jenetopulos	Steven Lett	Kathy Moyer	Anita Risbridger	Richard Sosnowski	Hannah Meg Weinraub
Laurel Bayless	Meghan Chenoweth	Lynn Ebinger	Claire Guthrie	Marilyn Jensen	Diana Lett	Kasey Muhammad	Joanne Robb	Diana Sosnowski	Yonatan Weiss
Laura Bayless	Claire Chien	Marjorie Eckert	Virginia Haag	Betty Jewell	Ellen Lewin	Malcolm Muhammad	Ernest Robles	Roger Soule	Jennifer Weizer
Helen Becker	Linda Chong	Angie Eder	Chuck Haag	Carol Johnson	Donald Lord	JoAnne Munley	Anne Rogers	Gretchen Soutear	Violet Weizer
Carole Becker	Michelle Chui	Lily Egol	Marlene Habermann	Alwyn Johnson	Wanda Lord	Mark Munley	Janice Ross	Stephen Starks	Susan Wentz
Dennis Becker	Todd Church	Susan Eichner	Rebecca Haddad	Wendy Johnson	Mary Ellen Luft	Patricia Munsell	Bradley Roswell	Kathleen Staten	Carla Wheeler
Ron Becker	Lou Ann Churchill	Richard Eisenberg	Antoinette Haddock	Sophia Jones	Hannah Lui	Shane Murtagh	Shirley Royston	Susan Steele	Millie Whitbeck
Jane Becker	Zoe Clark	Maria Elshaw	Carol Haddon	Katrina Jones	Richard Luther	Christopher Myers	Cynthia Russell	Elfriede Steigerwald	Orlando Whitcomb-Worden
John Beery	Timothy Combs	Kim Elston	Catherine Haines	Christina Junga	Karen Luther	Susan Napolitano	Becky Ruthven	Catherine Stephenson	Leigh Wietsma
Margaret Beery	Pat Combs	Lee Elston	Laurel Halfman	Otto Kahler	Claudie Mabry	Laura Nell	Patrick Rutkowski	Kim Stout	David Wilcox
Theodore Beiderwieden	Karen Connick	Sarah Ely	Anna Halfman	Violet Kahler	Paul Madison	Alexandra Newman	Michael Rutkowski	Janet Stroup	Kathryn Wilcox
Tom Berg	Stephen Constantin	Lora Endres	Linda Hamrick	Courtney Kaiser-Sandler	Laurine Madison	Karen O'Brien-DeBakey	Kathy Sabel	Betty Strunk	Joan Williams
Tanya Berg	Katherine Cooke	Doug Essenmacher	Tracy Hankins	John Kasek	Kristin Malpass	Pam O'Hara	Amy Sailer	Mark Stuber	Cecelia Williams
Elizabeth Berger	Evelyn Cooper	Vickie Essenmacher	Helen Hankins	Loree Katahara	Constance Mann	Patrick O'Hara	Max Salzinger	Joan Studzinski	Bonnie Willings
Daniel Besselsen	Barbara Cooper	Peggy Falk	Cynthia Hann	Laura Kaufmann Arst	Barbara Marsh	Patricia O'Hara	Elizabeth Sayre-King	Elizabeth Stuk	Joanne Willis
Kathleen Bibb	Jack Cooper	Emily Fasan	Bob Hardley	Melvin Keranen	Georgia Martin	Christine O'Keefe	Rebecca Schamis	Anne Stull	Darlene Willman
Charlie Bibb	Bruce Corner	Roger Favorite	Isabelle Harrison Bregman	Karen Keranen	Lesley Matheson	Patty Oehmke	Evelyn Schlomer	Karin Summers	Gwen Willson
Kathy Bietau	Cheryl Correll	James Feahr	Penny Herd	Margaret Kernan	Mark Mathews	Becky Ogilvie	Jordana Schneider	Greg Surma	Margaret Wilson
Richard Bingham	David Costello	Karen Feahr	Jan Heverly	Jeff Kessler	Alice Matteson	Perry Ojeda	Laurence Schneider	Mary Jo Surma	A.J. Winegar
Amy Birtcher	Diane Costello	Annika Ferronato	James Higgins	Linda Ketterer	Lawrence Mawby	Laurie Orth	Mary Schoonover	Colleen Sweeney	Mary Wohlfert
Robert Boehm	Nancy Cotcamp	Cynthia Finks	Joan Higgins	Susan Kettering	David Maxson	Stanley Otto	Kerry Schubach	Jenne Sy	Peter Wolcott
Nancy Boehm	Ruth Counts	Glenda Finner	Janice Hilewsky	Christine Kiely	Julie Maxson	Morrie Ozinga	Paul Schulte	Patricia Tallman	Linda Wood
Lorelei Boehme-Leal	Sharon Czapiewski	Ellen Fivenson	Emita Hill	Patrick Kiely	Mark Mayfield	Jeana Paquet	Michelle Schultz	Sharlene Thomas	Ted Wood
Karissa Bone	Barbara Czarnecki	Taylor Fost	Kaden Hinkle	Angela Kim	Alexandria McCauley	Linda Patrick	Tracy Schwimmer	Amarra Thomas	Lauren Yuzon
Bessie Bone	James Dagwell	George Foster	Adrienne Hirsch	Charles Kinzel	Kathy McCurdy	Rebecca Pattinson	Elizabeth Scott	Bob Thompson	Elden Zang
Eileen Bora	Laura Dagwell	Suzanne Franko	Pat Hirst	Linda Kish	James McDermott	Bonnie Paul	Lisa Scott	Jeanette Thompson	Carole Zang
Layla Borghese	Elise Dahlberg	Robert Franko	Teresa Hittner	Alexander Klautky	Sharon McDermott	Maryellen Paull	Sandra Seidelman	Patricia Thompson	Kathy Ziege
Judith Bosma	Conor Dailey	Amanda Friedman	Nancy Hoagland	Darrow Klein	Dennis McIntosh	Christine Pederson	Michael Seidelman	Don Thomson	Hannah Ziegler
Megan Branstad	Beth Dassa	Pauline Frommer	Lisa Hofer	Molly Klettner	Julia McNamara	Jacob Peery	Pamela Shaberly	Irma Tooley	Jenna Zucker



The Board of Trustees and Officers

The Board of Trustees is the governing body of Interlochen Center for the Arts. It provides leadership to guide the institution and ensure its future success through vigilant oversight in support of its vision and values. The Board has fiduciary responsibility to preserve, protect, and promote the assets, reputation, and programs of Interlochen Center for the Arts. Members serve to advance its mission in strategic and competitive directions.

CHAIR

Glynn T. Williams
President and CEO
Williams & Moore Capital Corp.
Reliance Aerotech, Inc. & Reliance
Aerotech Services, Inc.
Navhouse Corporation
Authentic Seacoast Company
Toronto, Canada

VICE-CHAIRS

The Honorable Kurtis T. Wilder, Chair-Elect
(retired), Of Counsel, Butzel Long
Novi, MI

Sarah Harding
Associate Professor Emerita
IIT Chicago-Kent College of Law
Evanston, IL

TRUSTEES

Keith W. Baum
Managing Director
Asset Management, Abbot Downing
Scottsdale, AZ
(IAA 74-76)

Evan Breibart
Solicitor
London, UK

Casey G. Cowell
Founder, Chairman
Boomerang-Catapult, LLC
Traverse City, MI

Valerie Dillon
Founder and President
Dillion Galleries, Inc.
Bolton Landing, NY

Dr. Mohamed A. El-Erian
President-Elect, Queen's College,
Cambridge University,
Chief Economic Advisor, Allianz
Laguna Beach, CA

Saul Goldstein
CEO/CIO, ActivumSG Capital Management
London, UK

Cynthia Chormann-Hann
Executive Vice President & Secretary,
Chormann Family Foundation
Oakton, VA
(AS 78-79)

Stephen E. Hayden
Vice Chairman and Chief
Creative Officer (retired)
Ogilvy & Mather, Inc.
New York, NY
(IAC 62, IAA 62-64)

Nancy L. Hoagland
President, Mariel Foundation
Maple City, MI
(IAC 74)

Jeff Jacobs
Jacobs Endeavors, Ltd.
Brand/Media Strategy
Santa Barbara, CA

Susan Kettering
Vice President, Kettering Family
Foundation, Philanthropist
Professional Photographer
Maple City, MI

J. Christopher Kojima
Partner, Goldman, Sachs & Co.
New York, NY

Barbara Kratchman
Founder, President and CEO
ArtServe Michigan (retired)
Former Executive Director,
Michigan Council for the Arts
State of Michigan
Bloomfield Hills, MI

Gregg Latterman
Founder, Aware Records
Co-Founder, Positive Pretzels
Kenilworth, IL
(IAC St 88)

John F. Manuel
Vice President, Global Logistics &
Advance Teams, The Elton John Band/
Rocket Entertainment (retired)
Las Vegas, NV
(IAC 81-82, IAA 82-83)

David P. Min
Vice President of Businesss Innovation,
The Walt Disney Co.
Menlo Park, CA

Dr. Elaine H. Mischler
Pediatric Pulmonologist,
Professor Emeritus, University of
Wisconsin, School of Medicine
and Public Health (retired)
Waunakee, WI

Thomas W. Morris
Artistic Director (retired),
Ojai Music Festival
Executive Director (retired),
The Cleveland Orchestra
Cleveland Heights, OH
(IAC 59)

William C. Nelson
Consultant, Peregrine Petroleum
Dallas, TX

Tom Quinn
Attorney/Tax/Insurance Consultant
St. Pete Beach, FL

Dr. Barrett J. Rollins
Chief Scientific Officer, emeritus,
Dana-Farber Cancer Institute
Professor of Medicine,
Harvard Medical School
Boston, MA
(IAC 65-66, 68)

Becky Ruthven
CEO, Ruthven & Associates, LLC
Westport, CT

Rebecca "Becky" Vitas Schamis
Community Activist/Leader
Sands Point, NY

Sumit Sengupta
Managing Director,
BMO Financial Group
Evanston, IL
(AS 77-80, IAC St 82-84)

Claire E. (Corson) Skinner
CEO and Chairman (retired),
Coachmen Industries
Naples, FL
(IAC 71)

Charles "Chuck" Tyler
Managing Member
AZCAT Associates, LLC
Greenwich, CT

Sara Whiting
Founder and (retired) President,
Florida Collegiate Summer League
(FCSL)
Windsor, FL

Zhibai (Bill) Zheng
Chief Designer - Asia Pacific
Fiat Chrysler Automobiles
Shanghai, China
(IAC 91, IAA 92-96)

EX-OFFICIO TRUSTEES

Trey Devey
President, Interlochen Center
for the Arts
Interlochen, MI

Bruce A. Corner
President, Engagement Research
(retired)
Grawn, MI



Those who have served previously on the Board of Trustees
are vital to Interlochen's ongoing growth and success.
We thank you, and celebrate your service.

OFFICERS

Trey Devey
President

John Bogley
Vice President,
Philanthropy

Camille L. Colatosti
Provost

Patrick M. Kessel
Vice President,
Finance and Operations

Katharine Laidlaw
Vice President,
Strategic Communications
and Engagement

Brittany Verner
Corporate Secretary and
Assistant to the President

Dean W. Anderson[^]
(IAC 63, 65, ICA St 66, 68-69)

Robert M. Bass[^]

Paul C. Boylan[^]

Neil M. Bressler, MD[◇]
(IAC 66-72, St 75-76)

Gordon F. Brunner[^]

Lawrence D. Bryan

Harry C. Calcutt III[◇]

John C. Canepa[^]

Ralph J. Cerny[◇]

Nancy Bankoff Chalifour[^]
(IAC 63-64, 68-69, IAA 70-72,
IAA St 73)

Rebecca-Sen Chan[^]
(IAC 71)

Richard F. Chormann[^]

Lawrence W. Clarkson[◇]
(IAC 55-56)

Don V. Cogman[◇]

Bruce Coppock[^]
(IAC 66-68)

Andrew W. Cordonnier[^]
(IAC 80, IAA 80-81)

Carl M. DeFaria[◇]

Michael C. Dermody[^]

Sandra A. Drew[^]
(IAC 55)

Douglas R. Eicher
(AS 74-77, IAA 78)

Janet S. Eilber[^]
(IAC 62-64, 66-68, IAA 64-69,
IAC St 70, 72)

Peter C. Erskine
(IAA 68-71, IAC Fac 10)

Kenneth C. Fischer[^]
(IAC 55, 57-58, 60-62,
Faculty/St 66)

Beverly Patterson Frier[^]

Sheldon Goodman[^]

Lowell J. Gruman[^]

Karla J. Herbold
(IAC 58, IAC St 87-89)

T. Michael Jackson[^]

Timothy M. Jackson[^]
(IAC St 80-81)

John Kane[^]
(IAA 74-76)

Charles L. Kelly[^]
(AS 43-46)

Sarah S. Lutman[^]
(IAC 69)

James Gary May[^]

John E. McGarry[◇]
(IAA 81-84, IAC St 84)

Joel McNeely[^]
(IAA 74-77, IAA St 76)

Nancy J. Meek[^]

Bonnie K. Mills

Myrl Nofziger[^]

John H. Peterson[^]
(IAC 60-61)

William F. Pickard[^]

David S. Rhind[^]
(IAC 78-79)

Anthony C. Ruda[^]

Judith Dow Towsley Rumelhart[^]
(IAC 50-52)

Judith B. Schlabach[^]
(AS 55-56, IAC St 57)

Alan E. Schwartz[◇]

Harold T. Shapiro
Isabel F. Smith[◇]
(AS 50, IAC 51-52, Faculty/St 76)

Louis A. Smith[^]

Van P. Smith[◇]

Stanford L. Thompson
(IAC 00-03)

James P. Spica[^]
(IAC 72-74, IAA 74-75)

Ronald F. Stowe[^]
(IAC 55-62, IAA 62-63,
IAA St 64, 66)

James L. Tolley[◇]

Steve E. Upton[◇]

Gary C. Valade[◇]

William P. Vititoe[^]

Elliot Weissbluth[^]
(IAC 79-81, IAC St 84, 87-88)

Katherine E. White[^]
(AS 79-80)

Karen Wolff[^]

Shirley Young[^]



Interlochen
CENTER FOR THE ARTS

P.O. Box 199 | Interlochen, MI 49643
www.interlochen.org